

Lancaster County
Behavioral Health
Jail Diversion Program



Evaluation Findings

November 15, 2007
Sheraton Station Square Hotel
Pittsburgh, Pennsylvania

Today's Presentation

- Methodology – different sources of data and sample sizes.
- Recidivism:
 - Why incarcerating persons with mental illness is an issue.
 - Divertees recidivate less compared to other persons—will compare 3 groups of persons.
 - Divertees recidivate less compared to their own previous behavior.
- Divertees use fewer emergency services.
- Divertees' attitudes have improved.
- Divertees' symptoms have improved.
- Divertees are no longer unemployed and looking for work.
- Questions?

Methodology

Two recidivism research designs:

1. Comparison Groups:

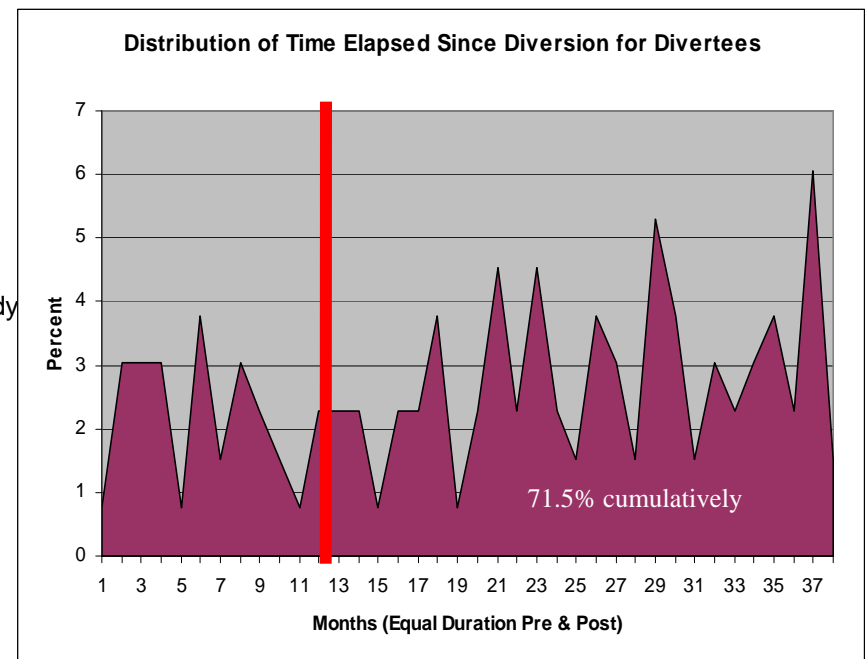
- No association with mental illness
- Potentially mentally ill persons who remain in corrections
- Divertees

2. Classical pre- and post-test design:

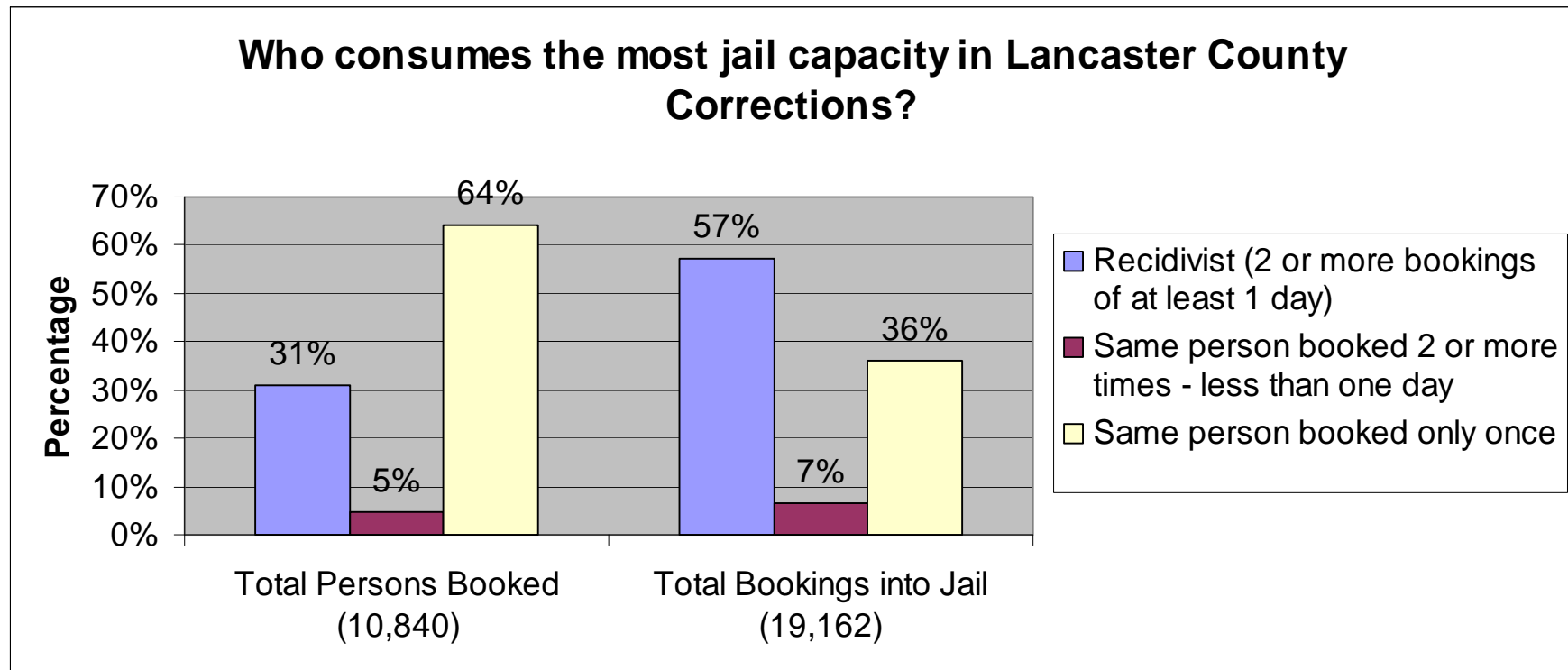
- Individual level pre- and post-diversion booking comparison
 - One year prior and one year post
 - Equal durations: ranging from 38 months to less than 1 month
 - 71.5% of the equal duration sample have a study period greater than 12 months
- T-test
 - What is a paired samples t-test?
 - 90% confidence interval

Longitudinal design

- Symptoms
- Improvement
- Employment

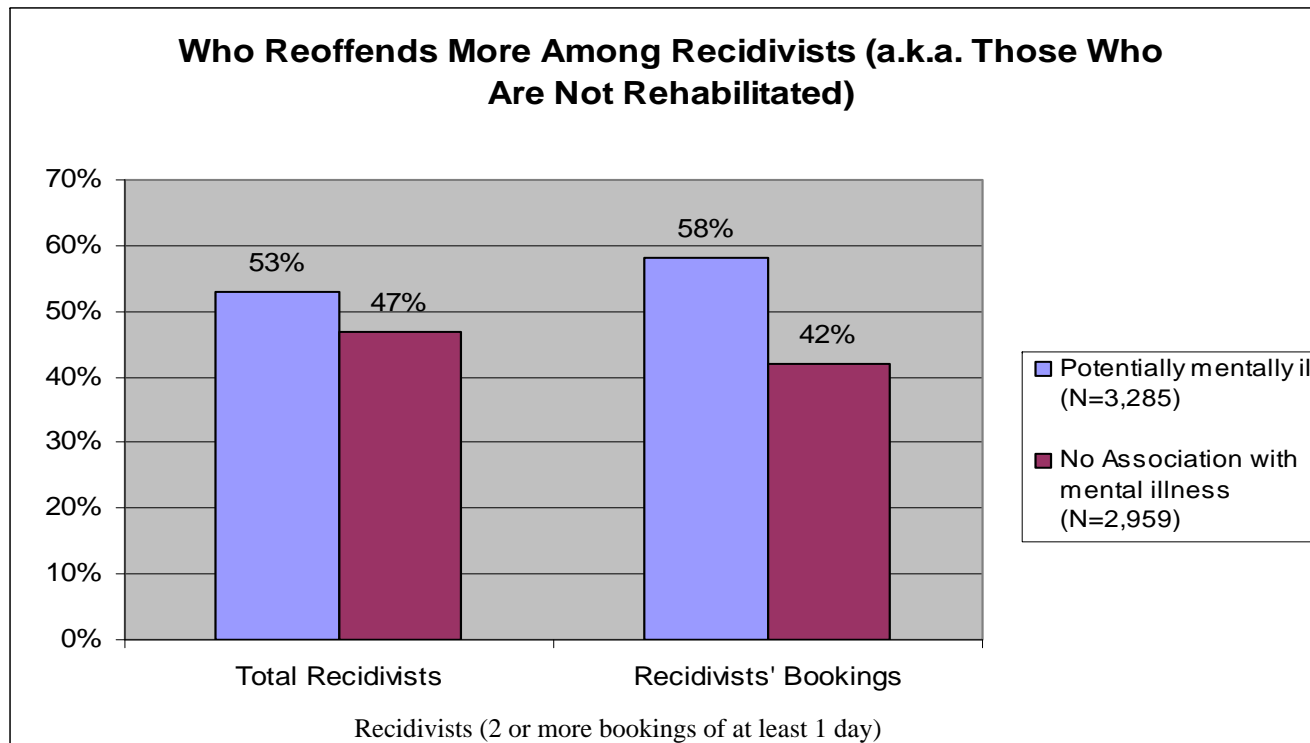


Those Who Re-Offend Commit Most of the Crimes



- 31% of those booked are responsible for 57% of the bookings (a.k.a. arrests)-This is a 2 year “snap shot” at the L.C.J.
- How “recidivist” is operationalized.

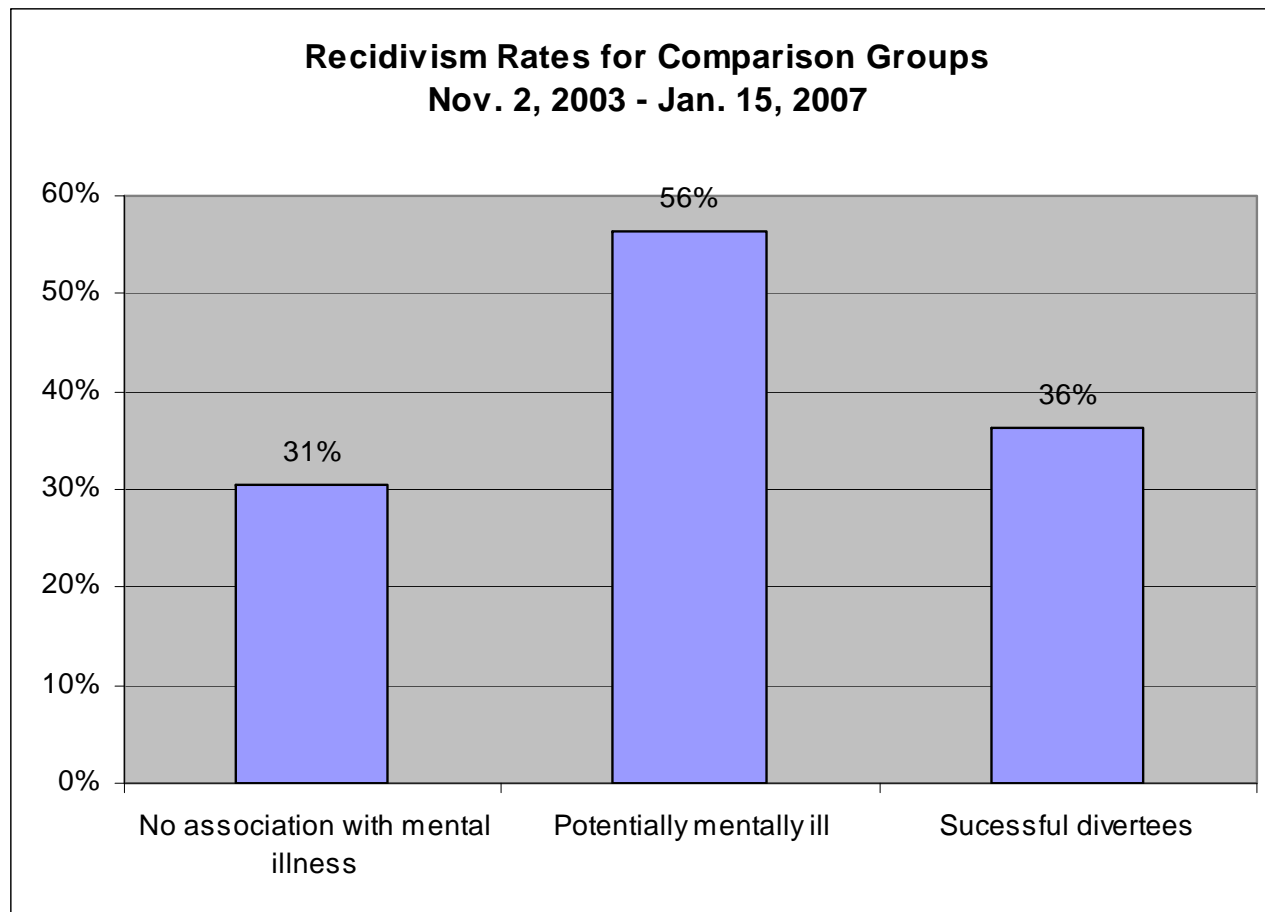
Recidivists Differentiated by Mental Illness



Persons who are potentially mentally ill:

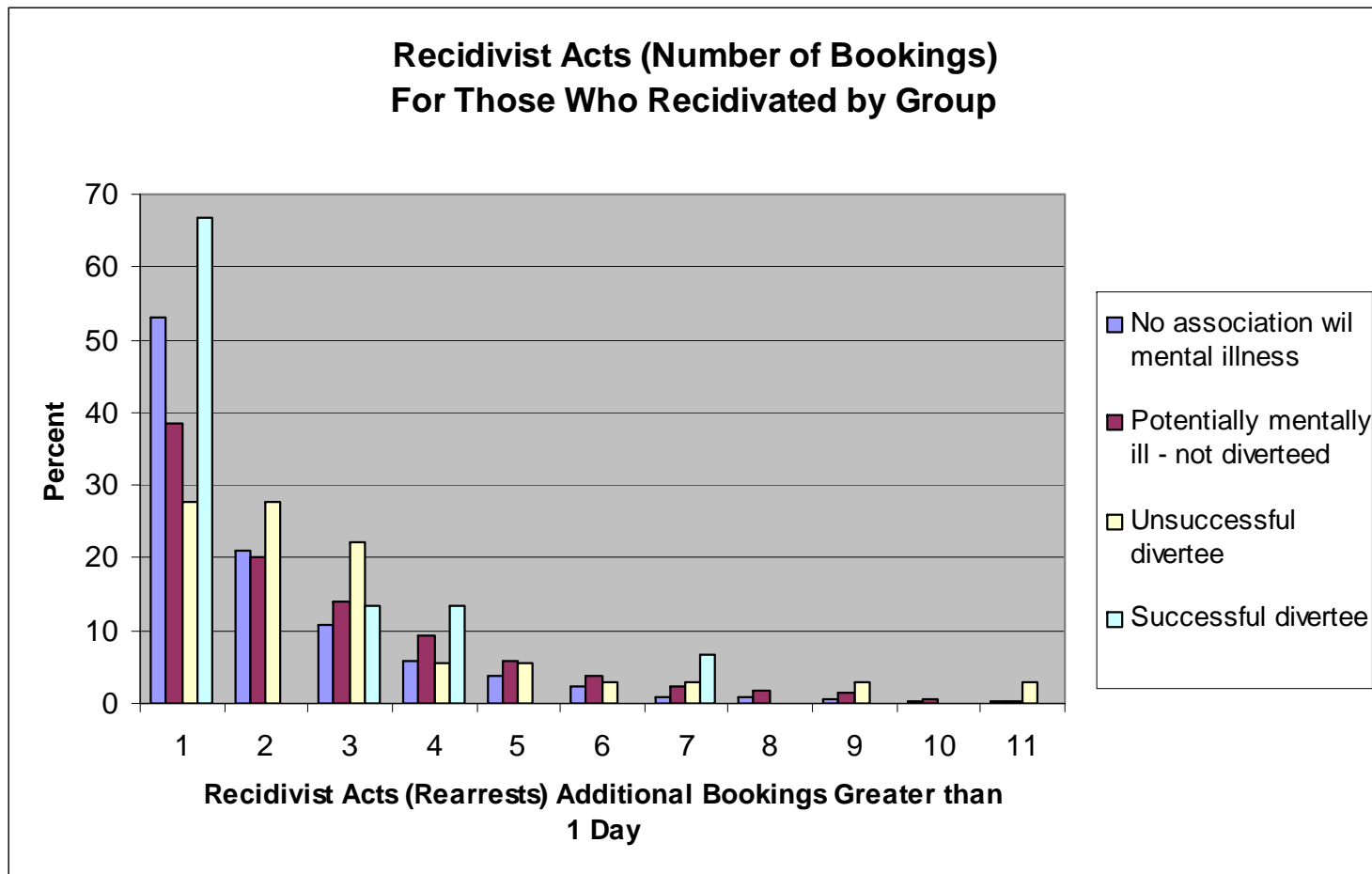
- Are the majority of those booked back in and:
- They account for disproportionately more than their share of the recidivists' bookings.
- 53% of recidivist population comprises 58% of recidivist bookings.

Divertees Recidivate Less Than Others with MI in Corrections



Dimensions of Recidivism

Successful divertees are booked back into jail less often.



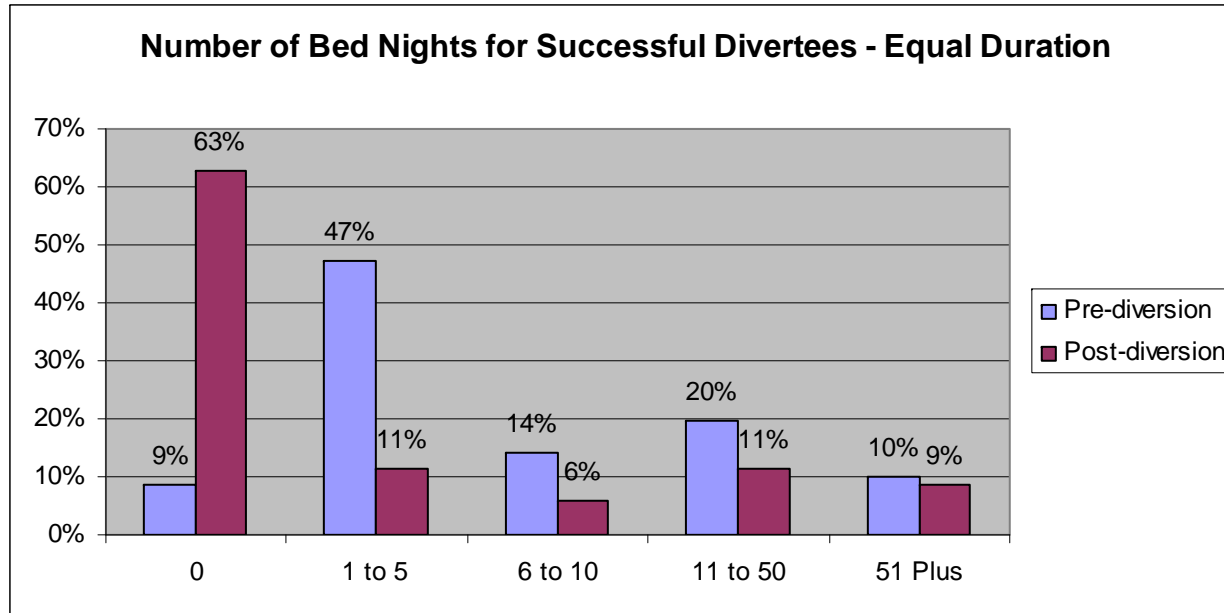
Successful Divertees

Successful Divertees						
	Mean Number of Bookings			Mean Number of Bed Nights		
	Prior	Post	Significant	Prior	Post	Significant
Equal Duration	1.5429	0.6857	Yes	22.7429	16.1571	No
One Year	1.3857	0.3714	Yes	20.6286	5.0143	Yes

- The difference between successful divertees being booked into jail pre- and post-diversion is statistically significant regardless of the test parameters.
- There is a decrease in average bed nights per divertee.
 - For One Year pre- and post-diversion the difference is statistically significant.
 - Equal Duration average bed nights per divertee has a few anomalies--will talk about these in the next slide.

Successful Divertees

Reduction in Jail Bed Nights



- A few anomalies skew data.
 - 3 successful divertees were booked in for over 200 days creating a variance problem for the statistical analysis.
- Regardless, divertees do recidivate less.
 - 63% of those who successfully have met or are meeting the terms of the program have never gone back to jail.

Unsuccessful Divertees

Unsuccessful Divertees						
	Mean Number of Bookings			Mean Number of Bed Nights		
	Prior	Post	Significant	Prior	Post	Significant
Equal Duration	2.1356	2.1695	No	26.5593	38.5593	No
One Year	1.7119	1.0508	Yes	19.5085	21.8983	No

- **Revolving door spirals upward**
 - In Equal Duration the mean number of bookings and bed nights increased.
- **Positive effect of being in the program, even for unsuccessful divertees**
 - The comparison between One Year prior and One Year post diversion shows an improvement – even terminated divertees, on average, spend a substantial amount of time in the program with their Intensive Case Manager.

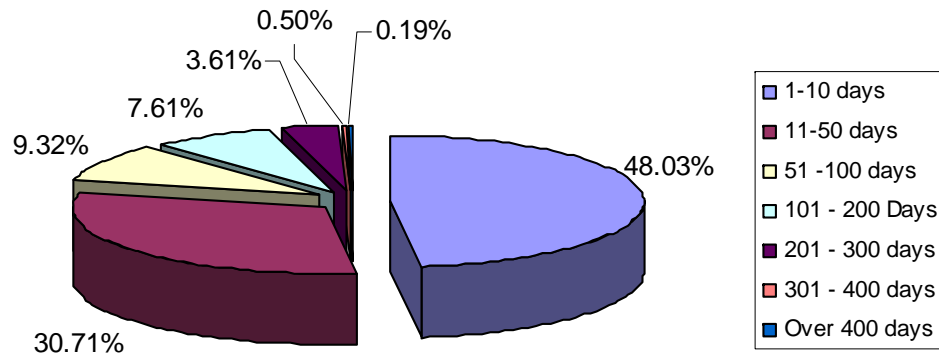
Length of Stay Facts

- Those divertees who recidivate are not staying as long as their counterparts.
- When those who are potentially mentally ill recidivate, they stay longer than any successful divertee.

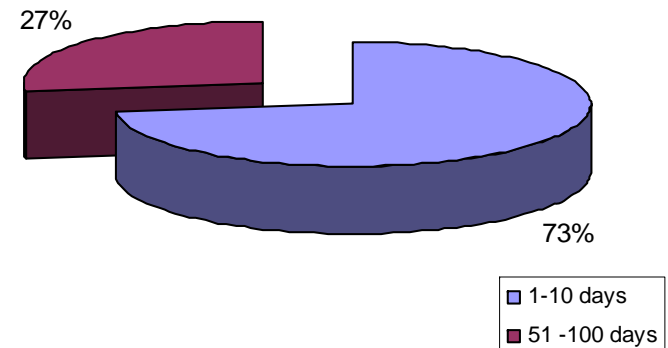
	Longest term - days	Percent staying past 62 days
No association	562	17.90%
Potentially mentally ill	644	32.40%
Successful divertee	62	0%
All divertees (incl. terminated)	119	21.20%

Length of Stay Comparison

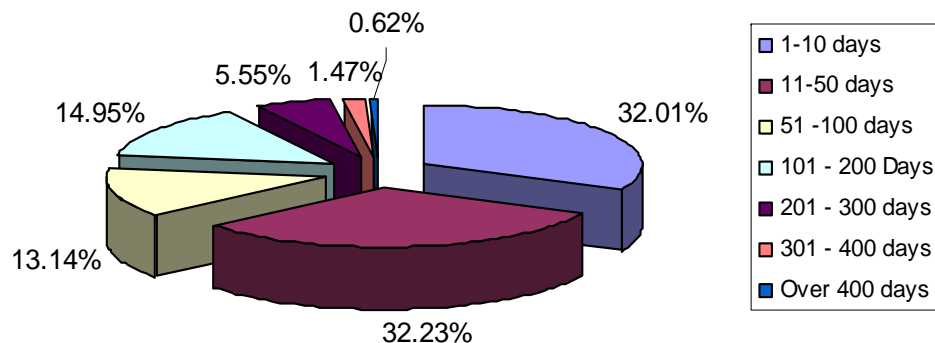
Recidivist Days for Persons with No Association with Mental Illness



Recidivist Days for Successful Divertee



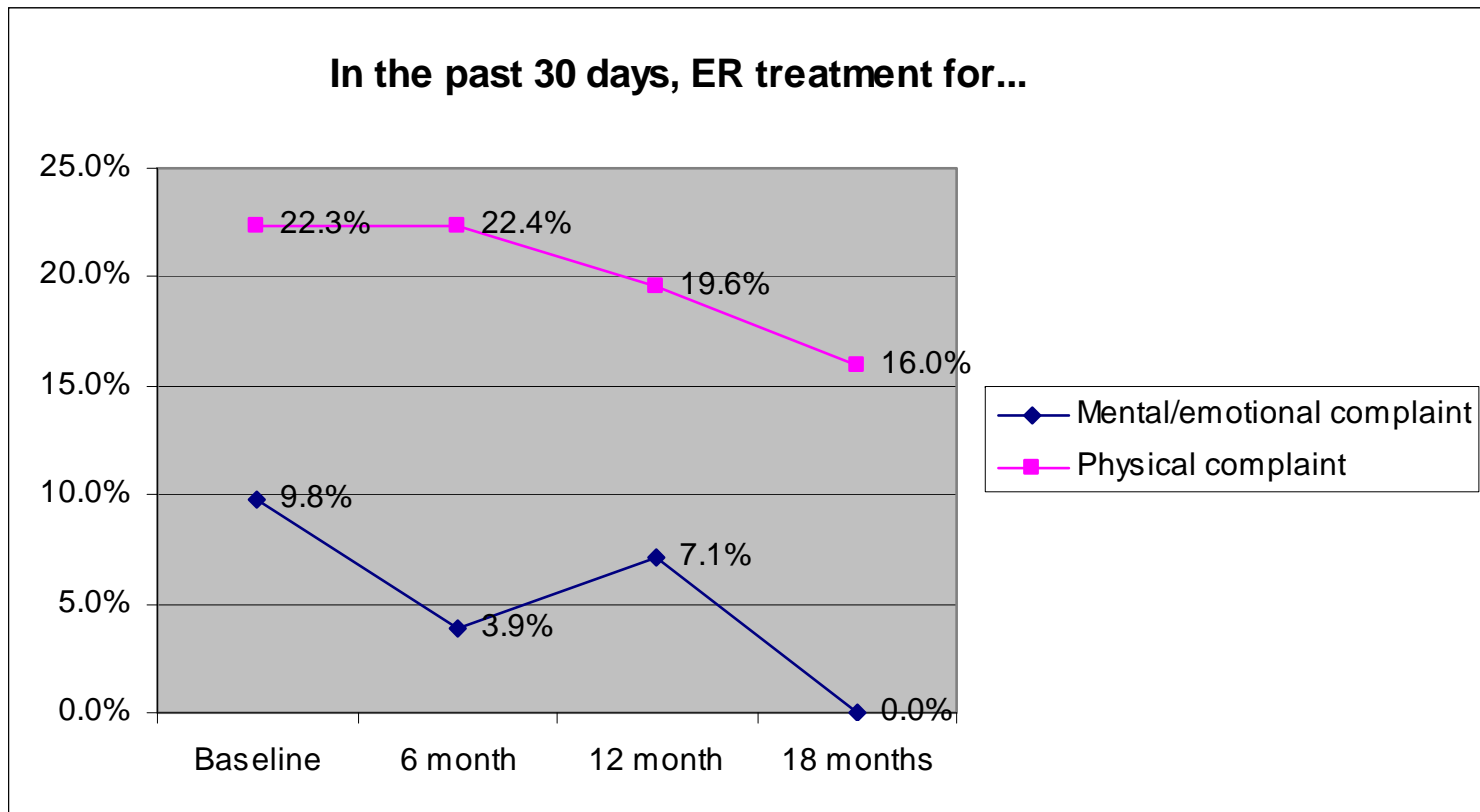
Recidivist Days for Potentially Mentally Ill Persons



Successful Divertees who recidivate do so for shorter durations than both:

- Recidivists in corrections with no association with mental illness.
- Recidivists in corrections who are potentially mentally ill.

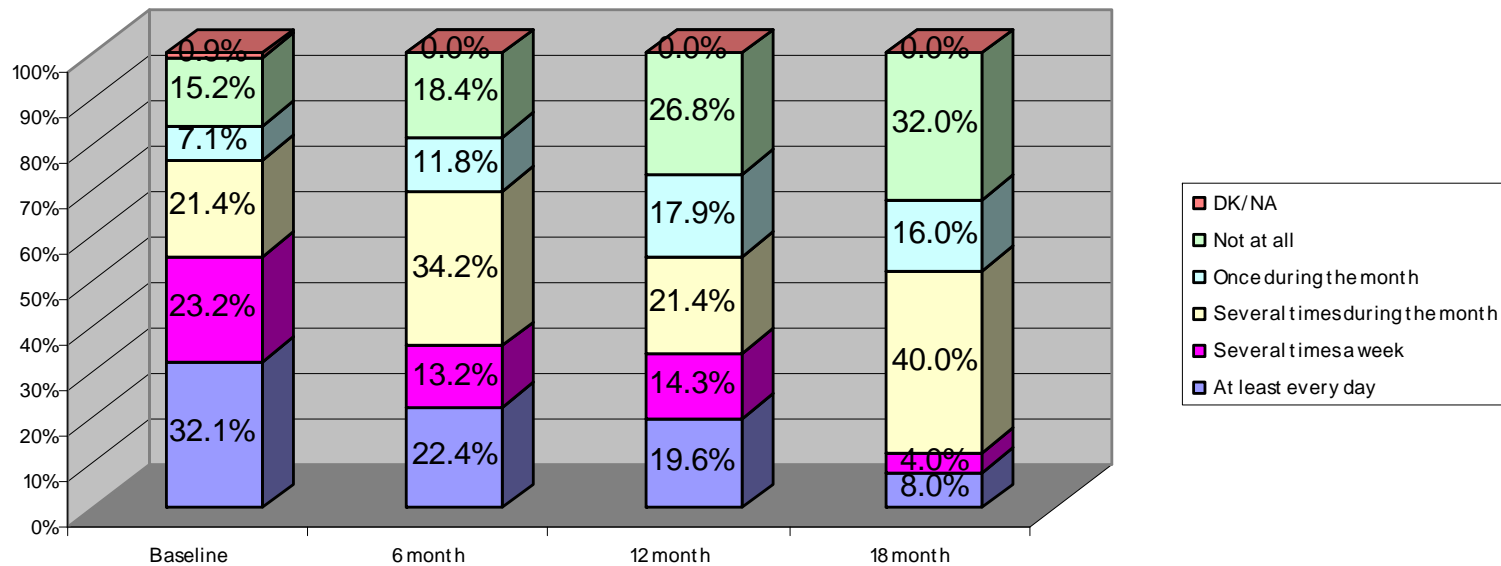
Reduction in the Most Costly Care



- Fewer divertees use the Emergency Room over time.
- Frequency of those divertees who continue to use is less.
- Overall usage declines.

Divertees' Symptoms Improve

In the past month, how often did you have trouble thinking straight or concentrating on something you needed to do (like worrying so much or thinking about problems so much that you can't remember or focus on other things)?

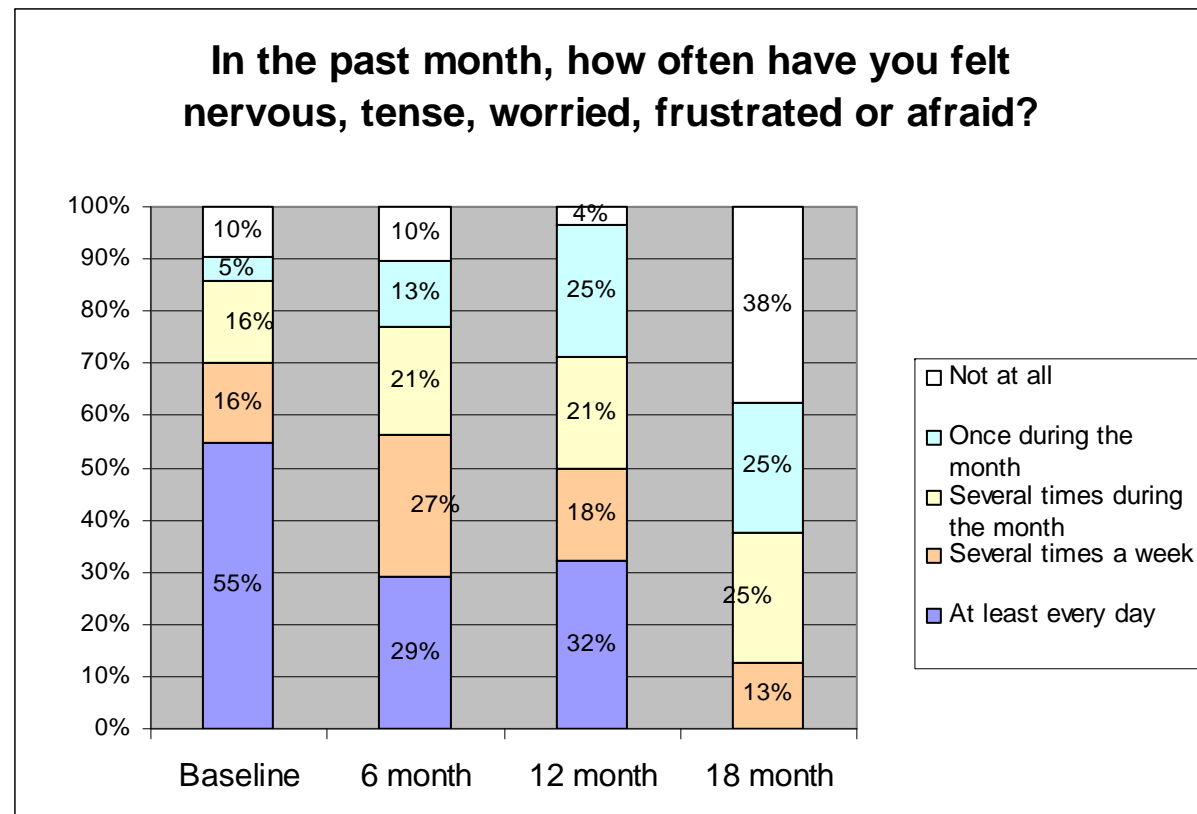


Colorado Symptom Index – 15 questions

- Improvement in all symptoms
 - Two most frequent occurrence categories diminish over time for divertees
 - Two least frequent occurrence categories increase over time for divertees
- Statistically significant improvement in most

Divertees' Symptoms Improve

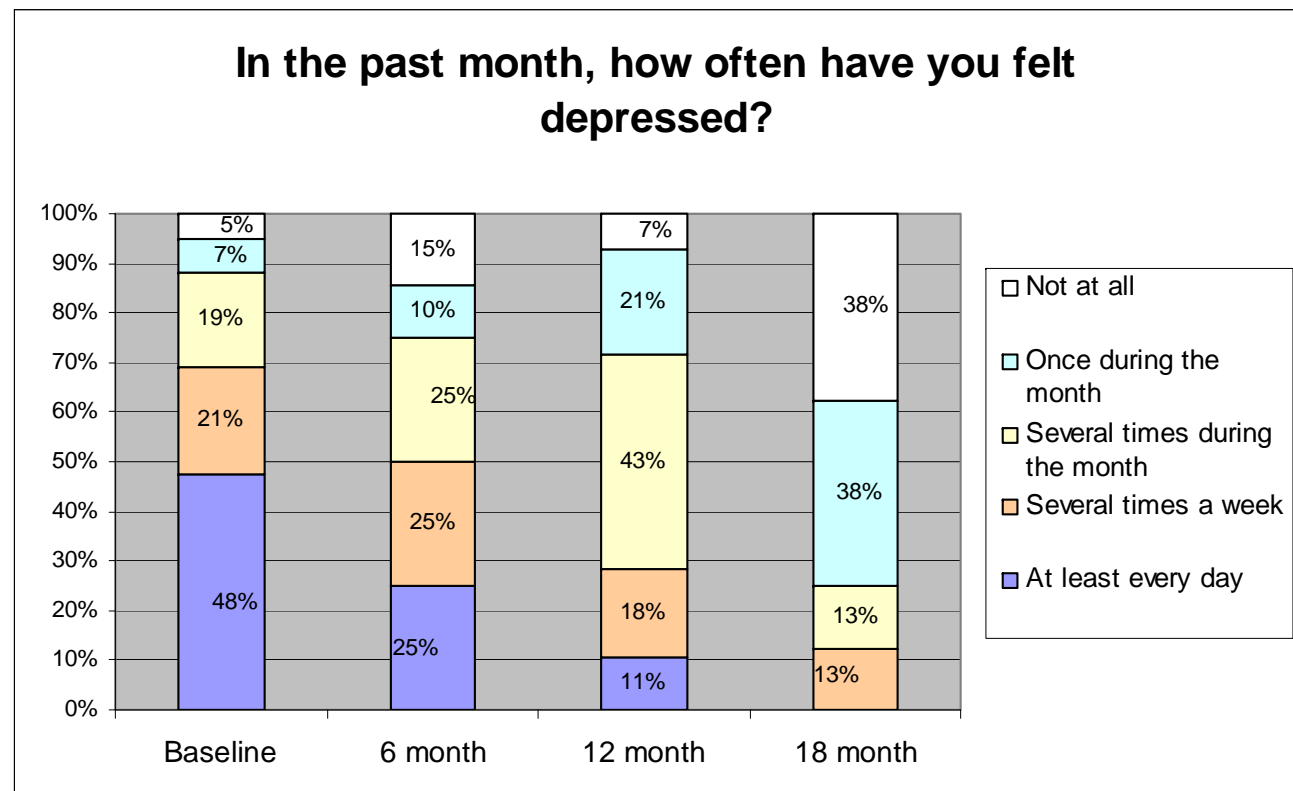
**Colorado
Symptom
Index—15
Questions.**



Divertees' Symptoms Improve

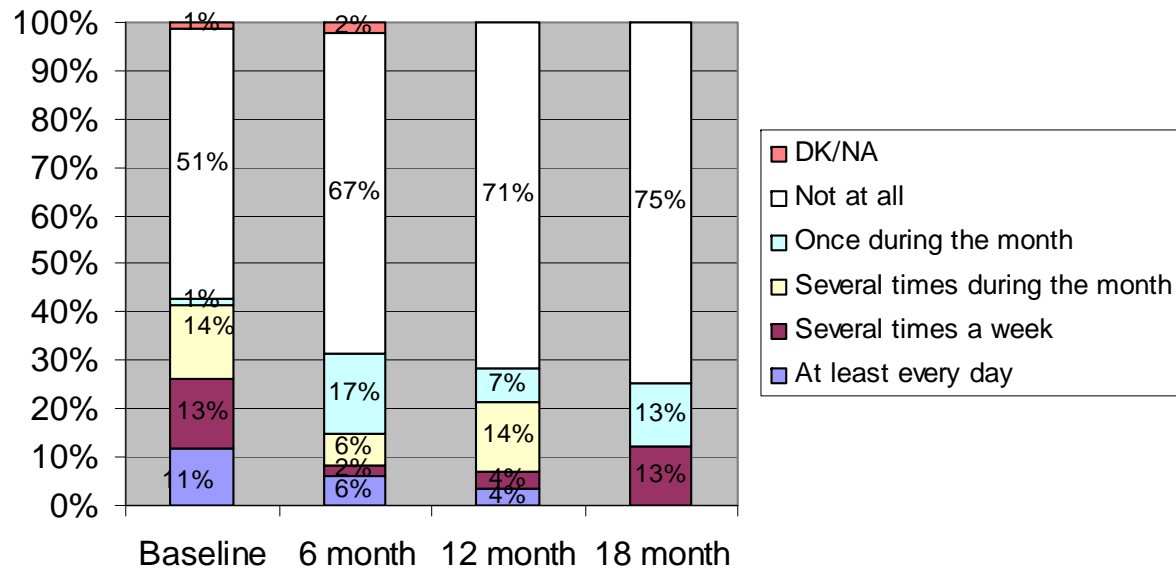
Colorado Symptom Index – 15 questions

- Two most frequent occurrence categories diminish over time for divertees



Divertees' Symptoms Improve

In the past month, how often have others told you that you acted paranoid or suspicious?

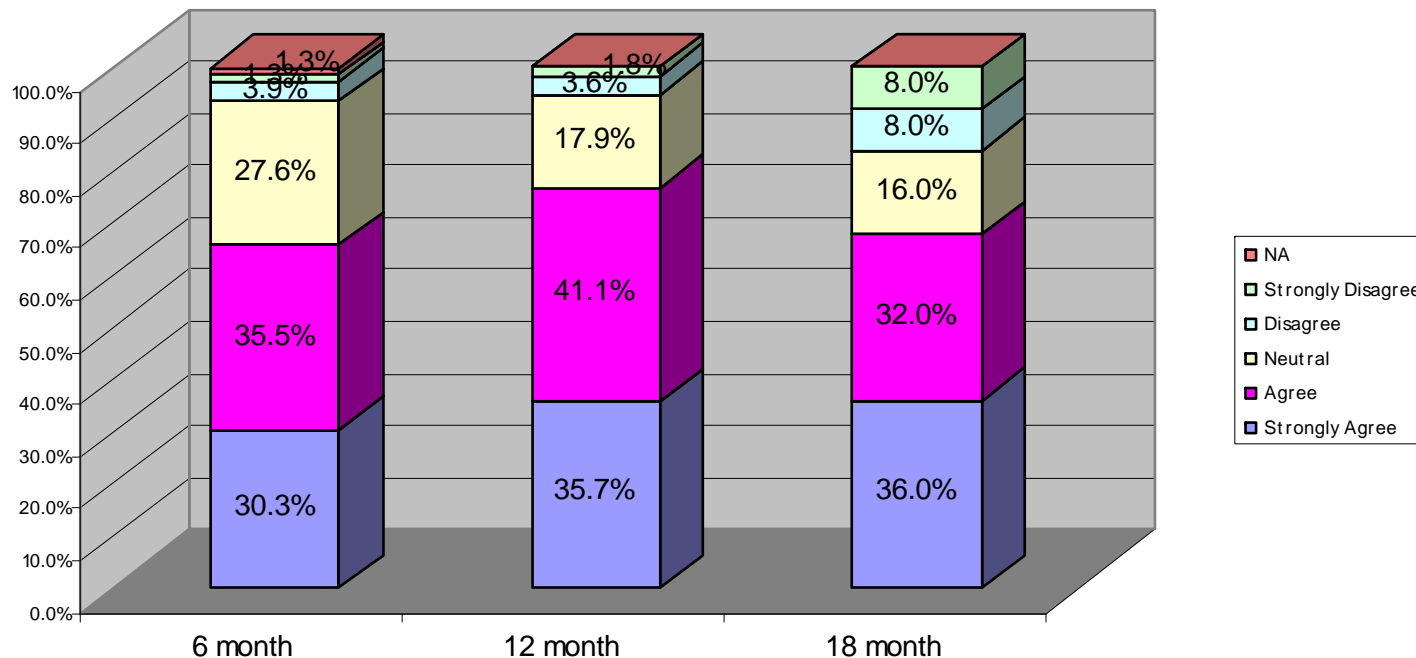


**Colorado
Symptom
Index –
15**
questions

- Only question that offers others' perspective, even though it is self-reported

Improvement Statistics

I am better able to control my life.

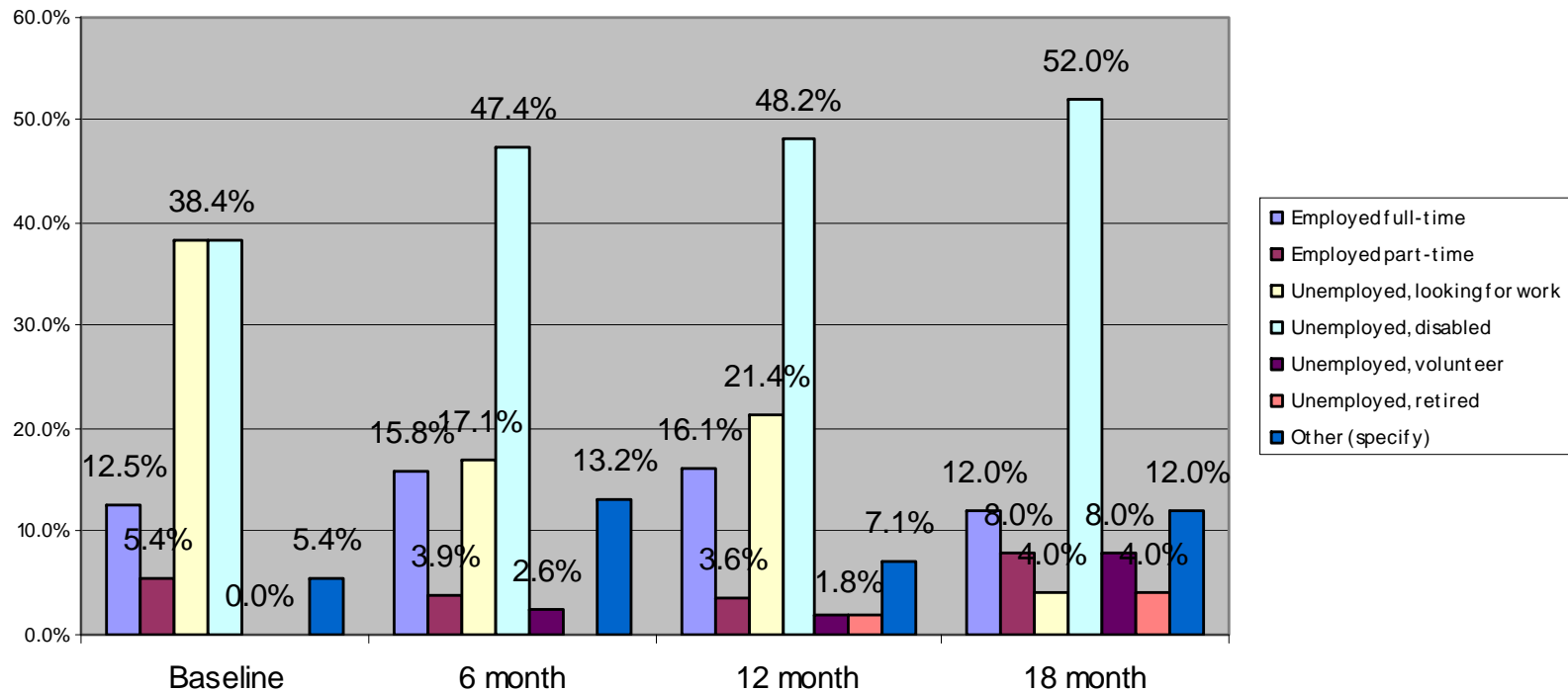


Series of questions

- Indication of the lasting effects of the program after direct contact.
- Similar results for the “work/school” question.

Employment

Are you currently employed?



- Not everyone will become a full-time employee – a more realistic goal may be to stabilize and contribute to society.
- Considerable reduction in “unemployed looking for work” 4% at 18-months vs. almost 40% at baseline.

Implications of the Data

- Program effectiveness:
 - Reductions in recidivism.
 - Better delivery of therapeutic services:
 - Divertees' symptoms have improved.
 - Divertees' attitudes are better.
 - Divertees are using fewer ER services and more regular ongoing services.
 - Finding a niche role in society.
- Questions?

CONTACT INFORMATION

Travis Parker, M.S., L.M.H.P., C.P.C.

Program Director

Behavioral Health Jail Diversion Program of

Lancaster County

Community Mental Health Center of

Lancaster County

2201 South 17th Street

Lincoln, Nebraska 68502

(402) 441-6610

tparker@lancaster.ne.gov