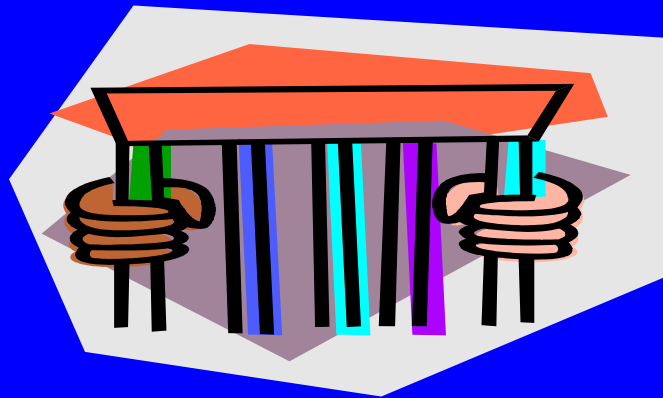


Eleventh Judicial Criminal Mental Health Project Jail Diversion Program

MEASURES AND ANALYSIS



**Cindy A. Schwartz, MS, MBA
Project Director**

JAIL DIVERSION PROGRAM

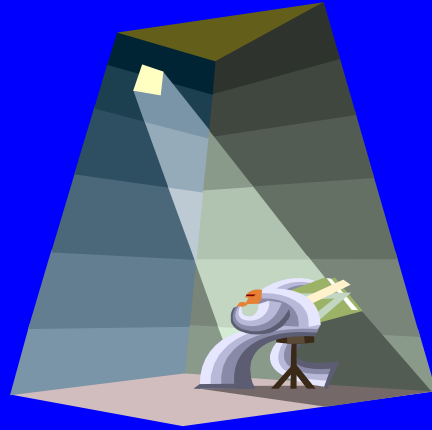
- **Target Populations: Individuals with severe mental illnesses that are at risk of or have been arrested for misdemeanors offenses.**
- **Goal: To assist the individuals to become diverted from jail and engaged in treatment, rehabilitation and support services that are essential to their long term, successful adaptation to community living.**

NEED

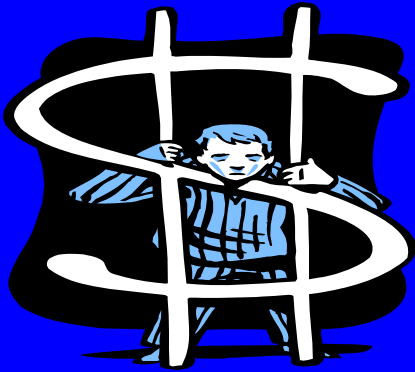
- **Miami-Dade County has among the highest percentage of persons with SMI of any urban community in the United States (9.1% or approximately 210,000 people)**
- **Less than 13% of these persons receive treatment**



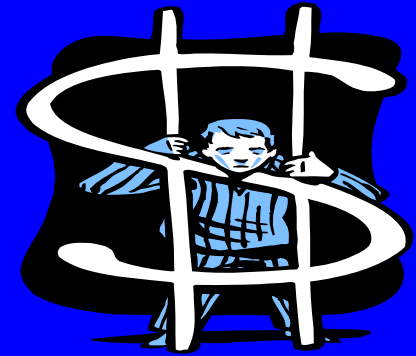
NEED



Although the Miami-Dade County jail has by default become the largest psychiatric institution in Florida, it cannot provide the necessary and appropriate treatment that is required for successful rehabilitation and recovery.



FACTS



- **There are 800-1200 detainees that experience mental illness on any given day at the Miami-Dade County jail.**
- **This represents approximately 20% of the total inmate population and costs taxpayers millions of dollars annually to manage this population in jail.**
- **Persons with mental illnesses stay in jail 8 times longer than those individuals without mental illness at a cost of 7 times more.**

TARGET GROUP

- **Estimated 90% Psychotic Disorders and 70% Co-Occurring Disorders**
 - **81% Male/ 19% Female**
 - **50% Homeless**
- **38% African-American, 32% White/Non-Hispanic, 30% Hispanic**
 - **Average Age: 45**



PRE-BOOKING



Crisis Intervention Team Policing (CIT)

CIT officers receive special training to respond to crisis calls involving persons with suspected mental illness. When appropriate, CIT officers transport individuals with mental illness to community mental health facilities for evaluation, treatment, and referrals instead of making an arrest.



CIT



- **33 of 33 Police Departments participate in CIT training**
- **More than 1,400 officers trained since 2003**
- **More than 800 CIT officers on Duty in throughout Miami-Dade County**



Meeting the Demand



- **12 CIT Trainings- 40 hour classes per year**
- **Communications Trainings for dispatchers and call takers**
- **Executive Training for Command Staff**

Mental Health Call Tracking Form

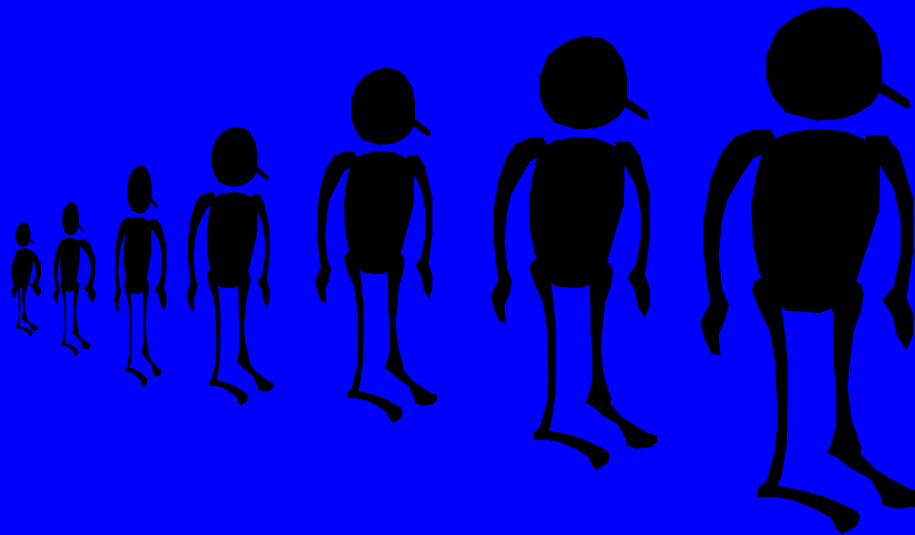
- **Demographics**
- **Nature of Incident**
- **Threats, Violence, Weapons**
- **Type of Force Used**
- **Possible Charge if Arrested**
- **Complainant Relationship**
- **Incident Injuries**
- **Drug/Alcohol**
- **History of Mental Illness**
- **History of Substance Abuse**
- **Treatment**
- **Medication**
- **Disposition**
- **Prior Contacts**

POST-BOOKING



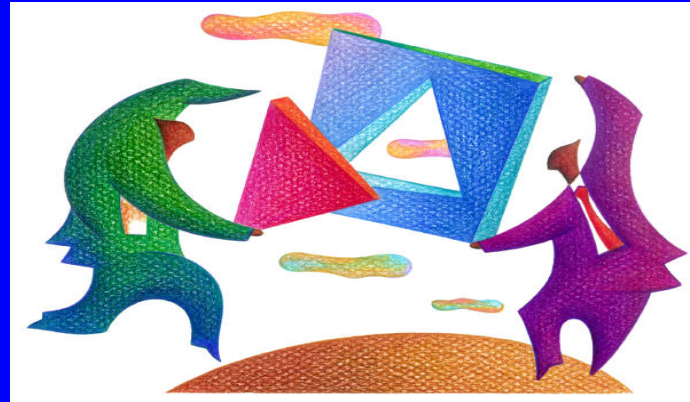
Misdemeanant defendants with mental illness are diverted from jail to community mental health facilities for appropriate treatment and continuing care within 24-48 hours after arrest.

POST-BOOKING



- **35 to 40 new referrals per month**
- **Continuing Care: 150 clients**
- **Clients served Annually: 300**

Community-Based Continuum of Care



Linkage to Treatment and Services will assist the individuals to access the programs and services that are essential to successful rehabilitation outcomes and community re-entry.

INITIAL DATA COLLECTION

- **Demographics**
- **Booking date**
- **Referral date**
- **Release date**
- **Charges**
- **Crisis Stabilization**
- **Accept/Refuse**
- **Linkage to Housing**
- **Linkage to Treatment**
- **Recidivism**

ANALYZE

- **TOTAL DIVERSIONS**
- **TOTAL INDIVIDUALS SERVED**
- **RECIDIVISM**
- **CHARGES and DISPOSITIONS**
- **LINKAGE TO THE COMMUNITY**
 - **HOUSING**
 - **PROVIDERS**
 - **TREATMENT/SERVICES**

COLLABORATION

CITRUS HEALTH NETWORK

- **Evaluation of housing with wrap around treatment and services for JDP clients**
- **182 consecutively referred clients from May 2001 – April 2007**

POPULATION CHARACTERISTICS

- **AGE**
- **EDUCATION**
- **GENDER**
- **HOMELESSNESS**
- **ETHNICITY**
- **DIAGNOSIS**
- **ARRESTS**
- **DISPOSITION OF
LEGAL CHARGES**
- **PSYCH CONTACTS**
- **LENGTH IN
PROGRAM**
- **SUCCESSFUL
COMPLETION OF
PROGRAM**
- **PRE AND POST
ARRESTS**

Summary of Evaluation

- Program appears to be effective in reducing arrest rates
- First 60 days appears to be critical for engaging clients in program
- Active involvement in psychiatric treatment correlated with better outcome
- Chronically homeless are at greater risk for poor compliance with program



JDP-HMIS Collaboration:

- **Adaptation of HMIS to collect info on:**
 - **Service utilization**
 - **Access to benefits**
 - **Income**
 - **Housing**
 - **Diagnosis**
 - **Immigration status**
 - **Criminal justice system involvement**

STAKEHOLDERS

- **The Courts**
- **Miami-Dade County Homeless Trust**
- **Florida Department of Children & Families**
- **Community-based provider agencies (7)**
- **Health Foundation of South Florida**
- **Florida International University**

Goals of the JDP-HMIS Collaboration:

- **Enhance client outcomes**
- **Improve program performance**
- **Facilitate program evaluation**
- **Promote cross-systems collaboration**
- **Increase likelihood of program funding and sustainability**
- **Demonstrate benefits to the community**

CHALLENGES

- **Compliance with data entry**
- **Accuracy of data entry**
- **Staff turnover and ongoing training needs**
- **Differences in agency level implementation**

LESSONS LEARNED

- **Keep it simple and be flexible**
- **Make it relevant**
- **Solicit user input**
- **Look for incentives**
- **Pre-commit to quality assurance and performance improvement**
- **Be patient!**

For more information contact:

Cindy A Schwartz, MS, MBA

Jail Diversion Expansion Project Director

Richard E. Gerstein Justice Building

1351 N.W. 12th St., Room 226

Miami, FL 33125

(305) 548-5319

cischwartz@jud11.flcourts.org