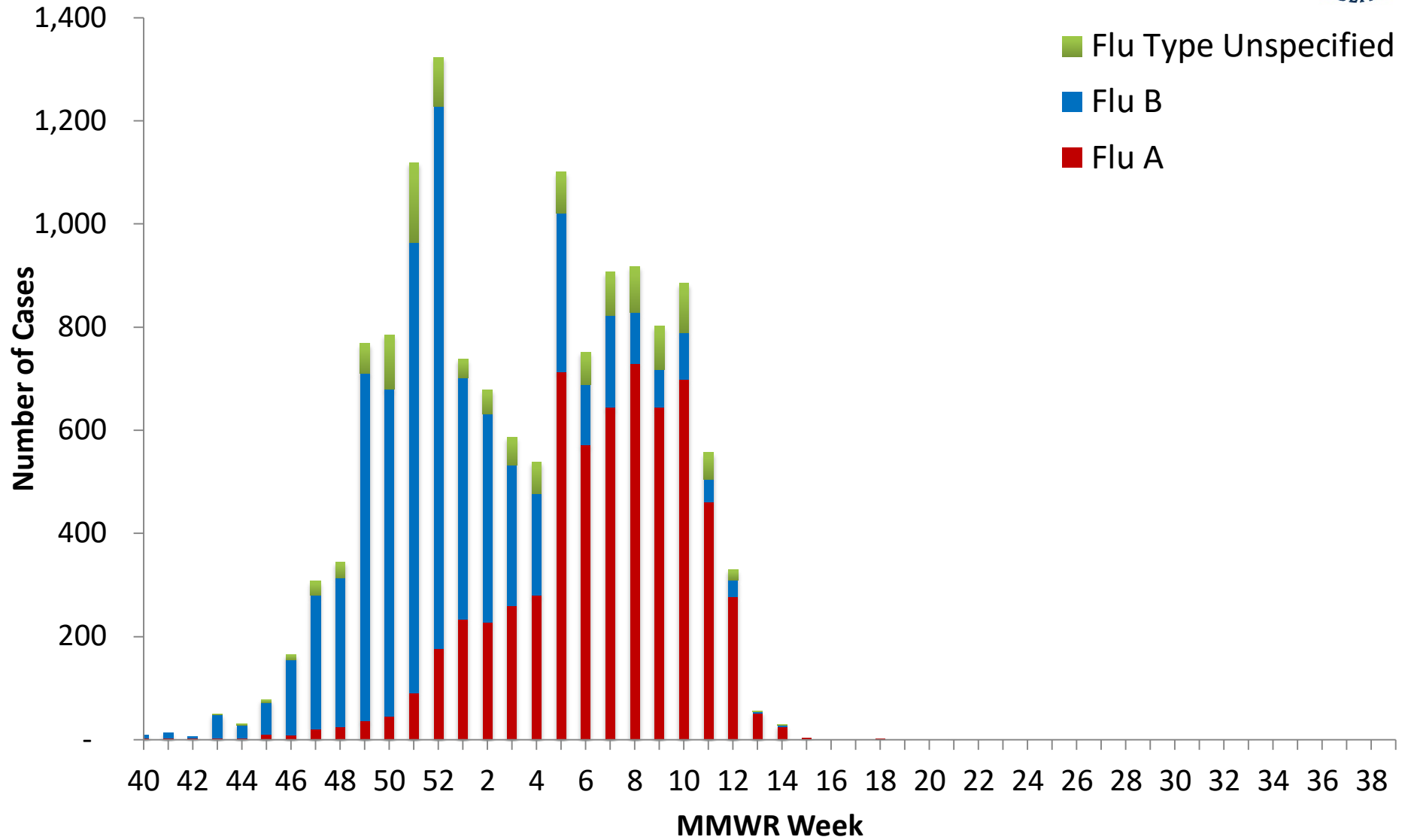
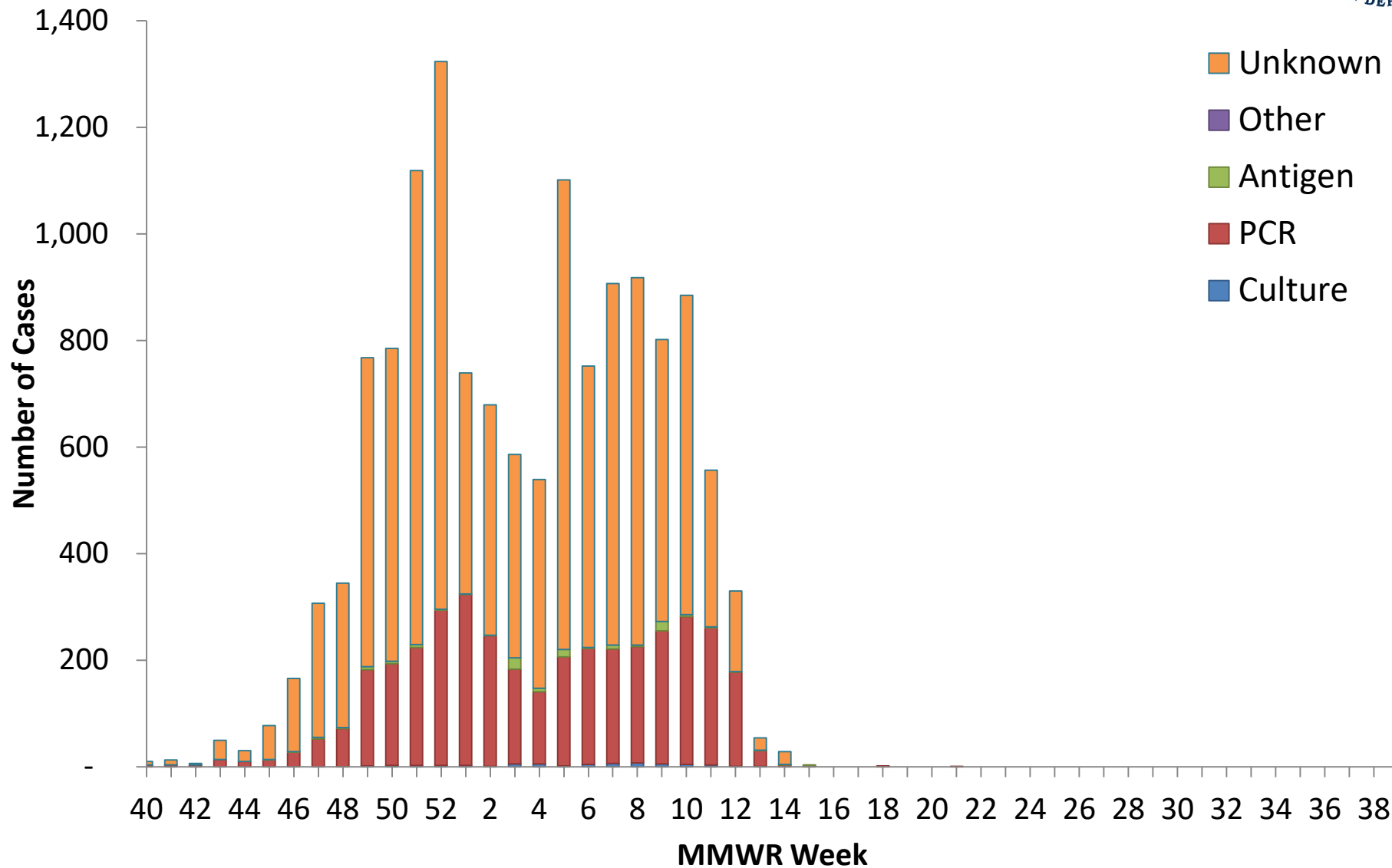


# Lab-Confirmed\* Cases of Influenza in Allegheny County by Flu Type September 29, 2019 – September 26, 2020



\*Lab-confirmed is a positive antigen, culture, or PCR test  
Source: PA-NEDSS

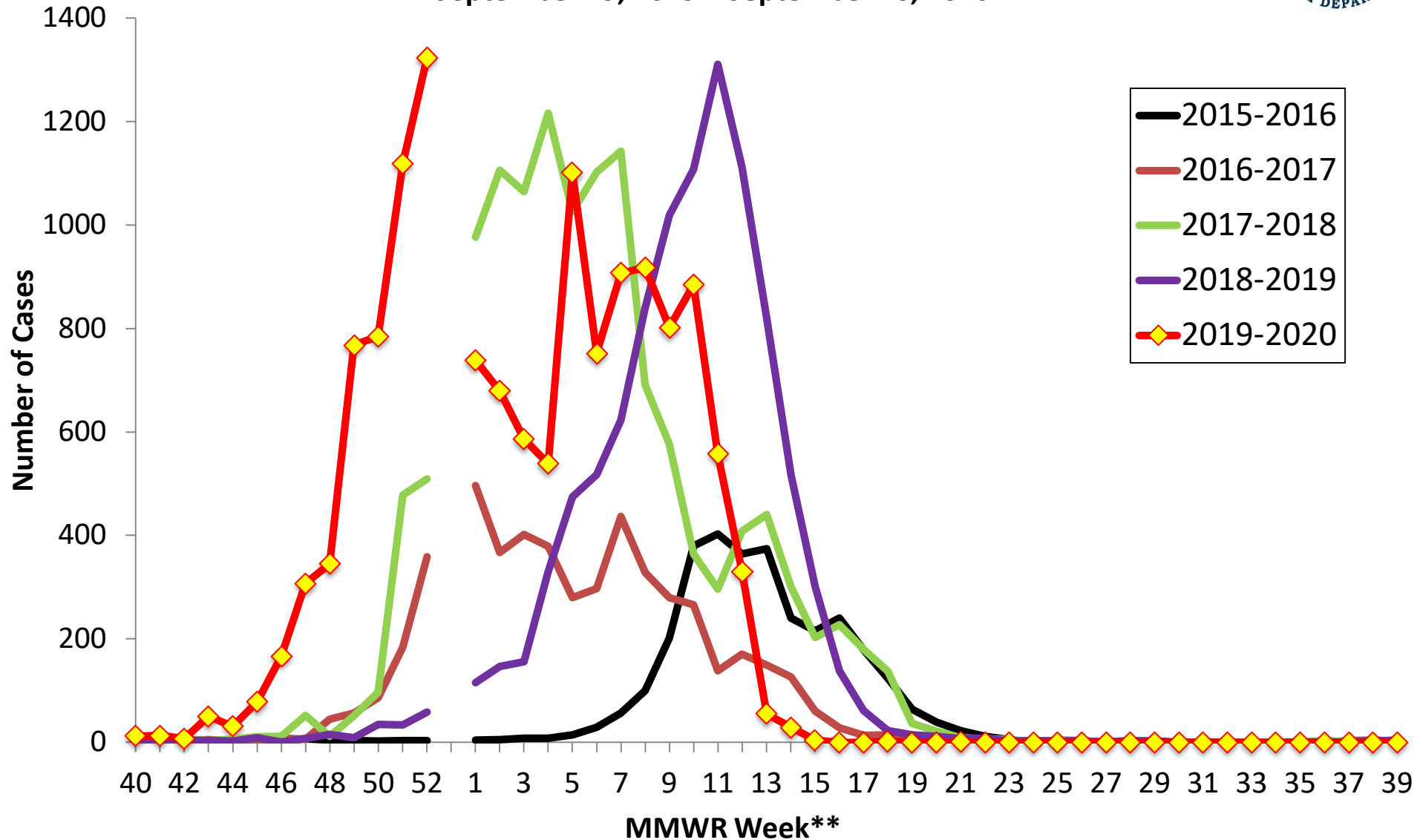
# Lab-Confirmed\* Cases of Influenza in Allegheny County by Testing Method September 29, 2019 – September 26, 2020



\*Lab-confirmed is a positive antigen, culture, or PCR test  
Source: PA-NEDSS



# Lab-Confirmed\* Cases of Influenza in Allegheny County 2015-16 Flu Season to 2019-20 Flu Season September 29, 2019 – September 26, 2020



\*Lab-confirmed is a positive antigen, culture, or PCR test  
Source: PA-NEDSS

\*\*MMWR Week does not fall on the same dates every year. MMWR weeks last from Sunday through Saturday and usually range from 1 to 52. Depending on how the days of the week fall across years, it is possible to occasionally have a Week 53

# Current Flu Season vs. Previous Flu Season

	2019-20 Flu Season as of September 26, 2020	2018-19 Flu Season as of September 28, 2019
Number of total cases*	13,890	9,856
Number of total hospitalizations	177	288
Number of total deaths	15	29

*\*A case is defined as testing positive via an antigen, culture, or PCR test*