



# Director's Office Report

**Patrick Dowd**

Acting Director &  
Chief Operating Officer





# 2024 Preview

## ADMINISTRATION

- Human Resources- Keep hiring on a positive trend
  - Off to a remarkable start - 2+ weeks into the year
  - 26 interviews complete- 15 more scheduled
  - 22 candidates with pending start dates or conditional offers
- Workforce Development
  - Dental Assistant Pilot to be launched in summer of 2024
  - Many department wide trainings such as SharePoint to increase staff knowledge and capabilities
- Internal Systems Improvements
  - Permitting & enforcement software systems
  - Laboratory Information Management System (LIMS)Human Resources

## CLINICAL SERVICES

- Expanding service and increasing convenience
  - Expanded At-Home STI testing
- Implement Clinical Services Billing
- Expand clinical services including
  - Opening satellite clinic in McKeesport
  - Expanding available screening and treatments
- New steps to achieve a high-performing clinic



## COMMUNITY & FAMILY HEALTH

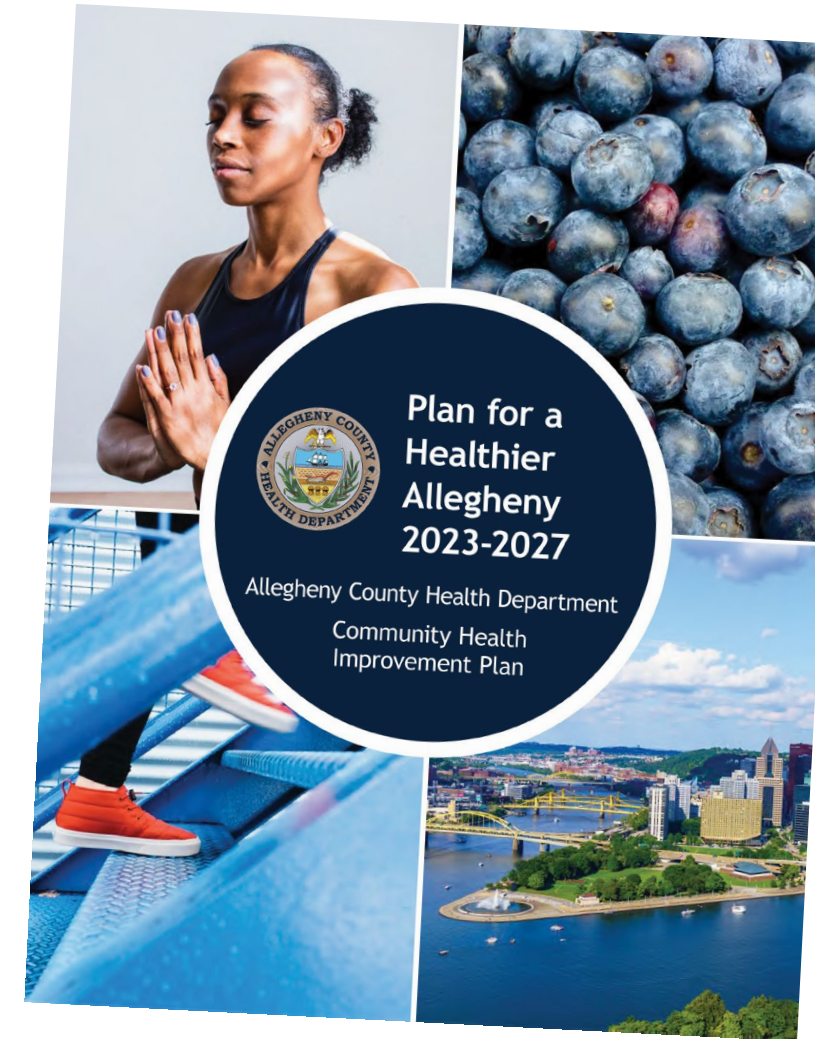
- Hire Chronic Disease Program Manager
- Draft BOLD strategic plan
- Assist ACHD in achieve Age-Friendly status
- Enhance access for families in Allegheny County- especially in communities with lower enrollment
- Increase access to home visiting services by trusted messengers





## DATA, REPORTING & DISEASE CONTROL

- Support the Plan for a Healthier Allegheny (PHA)
  - Continue to support the PHA through analyses of survey data and provide and annual update to the community
- New Survey methods
  - Collect Behavioral Risk Factor Survey data via email link to electronic survey
- Interactive dashboards to allow for more timely and transparent data
- Begin Evaluation of BOLD and REACH grants
- Publish update of [Accidental Overdose Deaths](#)



## ENVIRONMENTAL HEALTH

- Air Quality: Planning
  - Receive word from EPA regarding Redesignation
    - PM 2.5 Redesignation Request (November 2022)
    - SO2 Redesignation Request (October 2023)
  - Plan for new PM2.5 National Ambient Air Quality Standards
  - Continue to use Clean Air Fund to improve impacted communities
- Air Quality: Enforcement
  - Help the public understand the importance of compliance testing
  - Continue timely enforcement



**Regulated Entities Portal**

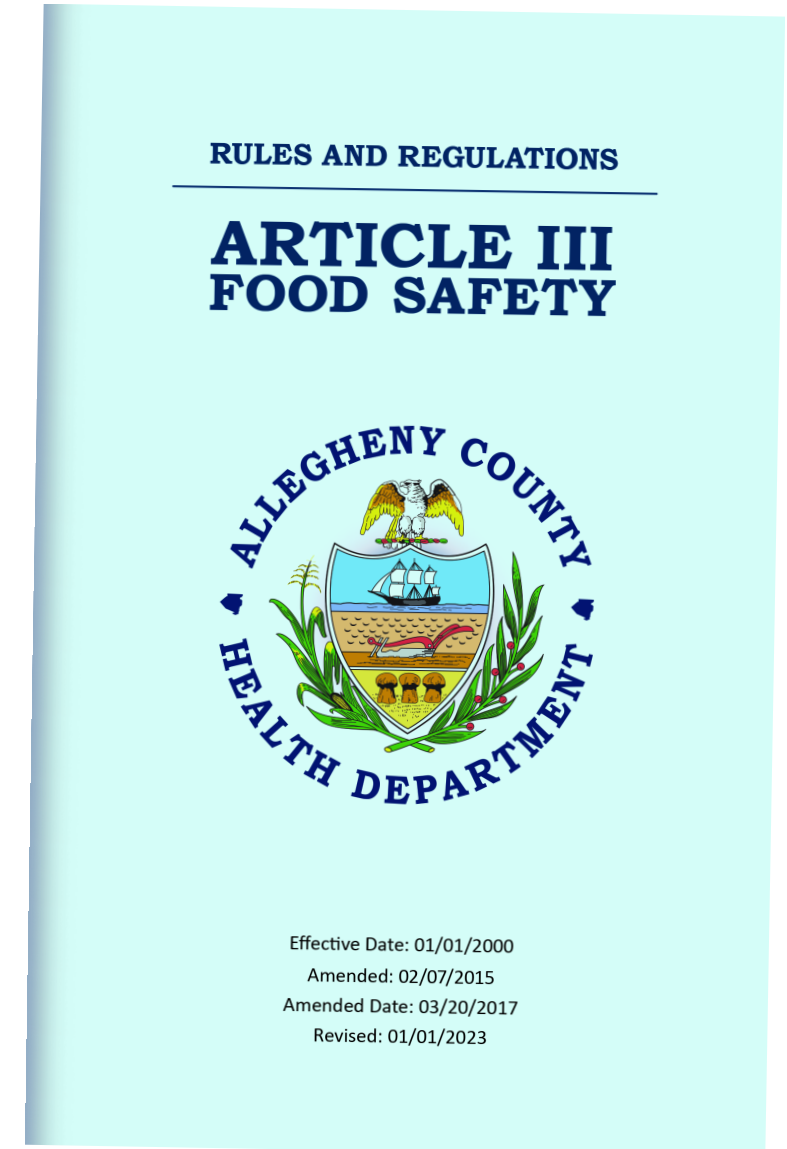
## ENVIRONMENTAL HEALTH

- Air Quality: Monitoring
  - Finalize plans for moving monitors at Clack
- Air Quality: Permitting
  - Continue to consistently and timely review applications for adherence to applicable rules, regulations, and standards
- Plumbing
  - Revise Plumbing Licensing Test
  - Plan for state approval of the next version of the International Plumbing Code
- Wastewater & Solid Waste Management
  - Revising our Solid Waste Management Plan



## FOOD, HOUSING & POLICY

- Food Safety
  - Implementation of new IT system
  - Continuous updating of Article III
  - Continued efforts at outreach
- Housing
  - Revision of Article VI
  - Implementation of new IT system
  - Expansion of mosquito vector control





## FOOD, HOUSING & POLICY

- Overdose Prevention
  - Continue partnering with DHS and the Department of Children Initiatives to develop strategies to support families and children
  - Implement plans laid out in OD2A grant
- Policy
  - Regulations are on schedule now for regular revisions
  - Revise all departmental procedures





## PUBLIC HEALTH LABORATORY

- New Public Health Laboratory
- New Laboratory Information System
- Self-Testing and other community oriented programs









# Medical Director's Report

**Barbara Nightingale, MD**

Deputy Director

Bureau of Clinical Services





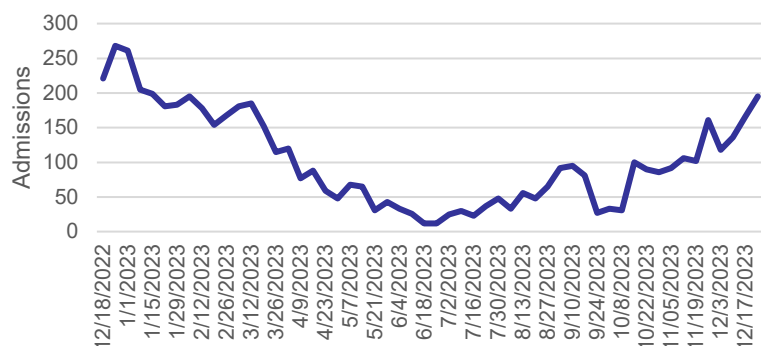


# Outline

- Respiratory Virus Season (COVID-19, Influenza, RSV) Updates
- Pertussis Update
- Measles Update

# Respiratory Viruses in Allegheny County

Hospitalizations with COVID-19



Influenza:

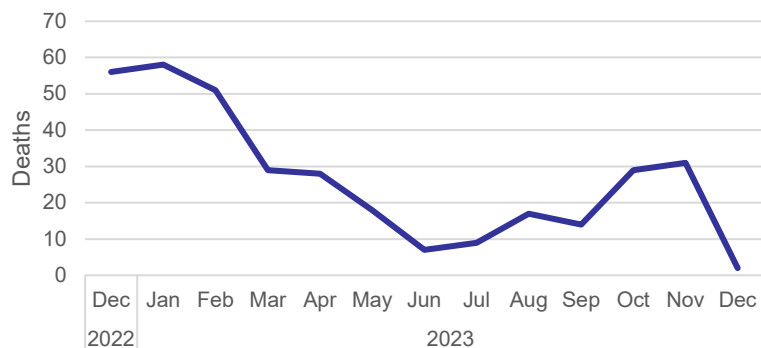
- Hospitalizations- 19
- Deaths- 6

RSV:

- Hospitalizations- 202
- Deaths- 0

Data source: National Healthcare Safety Network

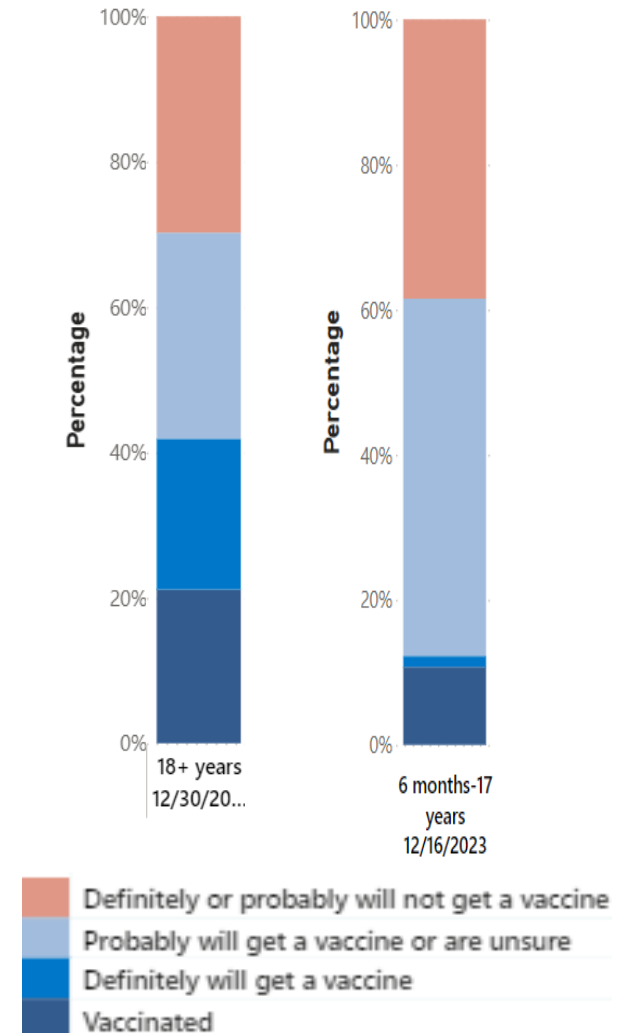
COVID-19 Related Deaths



Data source: Preliminary vital statistics data from PADOH

# Pennsylvania Vaccination Rates

- COVID-19 2023-2024 Formula
  - Adults: 21.1%
  - Children: 10.7%
  - Source: National Immunization Survey
- Influenza
  - Adults: 44.4%
  - Children: 51.1%
  - Source: National Immunization Survey
- RSV
  - Adults 60+: 14%
  - Pregnant individuals (National rate): 12.1%
  - Infants < 8 months (National rate): 20.6%
  - Sources: National Immunization Survey and CDC's Vaccine Safety Datalink





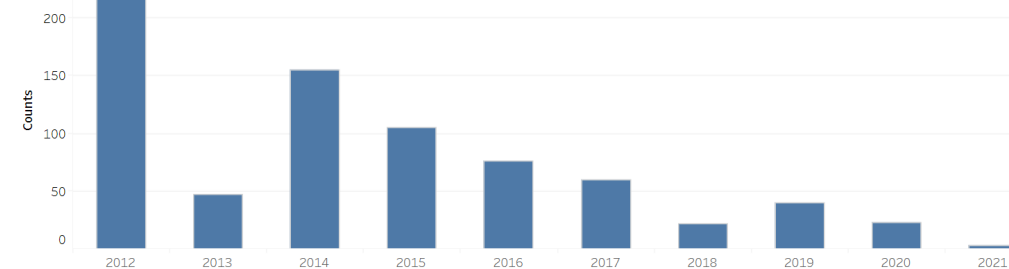
# What to Do

- Residents
  - Stay up to date with vaccines
  - Respiratory illness hygiene
  - Continue COVID testing
  - Ask primary care provider about treatment options
- ACHD's role
  - Vaccinations, healthcare provider updates, vaccine promotional materials, surveillance, outbreak investigation, limited case investigations



# Pertussis (Whooping Cough)

- Background
  - Bacterial disease, respiratory spread, antibiotic treatment available
  - Can cause complications/death especially in young children
- Impact
  - Increase in cases in PA
  - Allegheny County: 2023- 7 cases, 2022- 2 cases
- Steps residents can take
  - Learn about symptoms and steps to prevent infection\*
  - Stay up to date with vaccines (especially children and pregnant individuals)
- ACHD's role
  - Vaccines at Immunization Clinic
  - Surveillance of cases and vaccination rates
  - Investigation and health care provider guidance for all cases





# Measles

- Background
  - Highly contagious viral disease, respiratory spread, can cause complications/death
- Impact
  - 7 measles cases detected in PA in December 20 in PA
  - Allegheny County: Most recently reported in 2019 (7 cases)
- Steps residents can take
  - Get vaccinated- very safe and effective (>95%)
- ACHD's role
  - Vaccines at Immunization Clinic
  - Surveillance of cases and vaccination rates
  - Investigation and health care provider guidance for all cases

Table 7. Percentage of Kindergarten Students Immunized by School Type and Vaccine, Allegheny County, School Year 2022-2023

Vaccine	Charter	Parochial/Religious	Private/Independent	Public
MMR (2)	94.7%	90.5%	91.0%	96.1%

Source: 2022-23 Allegheny County School Immunization Report





# Plan for a Healthier Allegheny (PHA) UPDATE







## Plan for Healthier Allegheny, 2023-2027

### Our overarching goal:

*To ensure that Allegheny County residents live healthy lives as demonstrated by their physical and behavioral health and the environments in which they live, learn, work and play.*

### **Guiding principles**

- Equity driven
- Community engaged
- Data supported
- Policy oriented

### • **Priority areas**

- Physical health
- Behavioral health
- Environmental health

- Goals: 8
- Objectives: 37
- Potential Strategies: 55
- Metrics: 59
- Partners identified: 60+

## Guiding Principles

### Equity Driven

Everyone deserves a chance to lead a healthy life regardless of who they are or where they live.

### Community Engaged

Public health information is made available to everyone.

### Data Supported

Actions based on research and established best practices.

### Policy Oriented

Strengthen infrastructure and policy that improve health and safety where residents live, learn, work and play.

### Goals, Objectives, and Metrics



Plan for a Healthier Allegheny 2023-27 has three priority areas: **physical health, behavioral health, and the environment**. For each area, there is one overarching goal with a set of supporting goals. The overarching goal has one metric that will be used for evaluating progress. For each subordinate goal, there are multiple objectives, each of which is tied to one or more metrics for evaluation. In addition, potential or actionable strategies have been identified. This list is meant to be suggestive, rather than exhaustive. For each priority area, the ACHD has identified a lead county agency that will help coordinate the communication of the plan, the gathering of data, and the reporting of progress.

#### Overarching Goal:

Allegheny County residents live healthy lives as demonstrated by their physical and behavioral health and the environments in which they live, learn, work and play.

#### Summary of Priority Goals

##### Physical Health Goals:

- Goal 1. People of all ages engage in behaviors that promote physical health and reduce the risk of chronic diseases.
- Goal 2. All people have appropriate places to obtain medical and dental care.
- Goal 3. Decrease disparities in life expectancy and chronic diseases in Allegheny County.

##### Behavioral Health Goals:

- Goal 4. People have access to behavioral health services, including treatment for substance use disorders.
- Goal 5. People will participate in programs and activities that support mental health and well-being.

##### Environmental Goals:

- Goal 6. More people live in stable and safe housing.
- Goal 7. Fewer people experience violence in their homes and communities.
- Goal 8. More residents live in communities that are prepared to adapt to and absorb the impacts of climate change.

##### Guiding Principles:

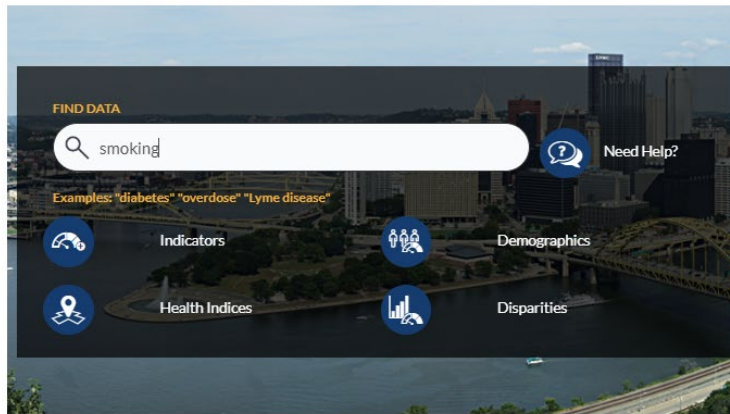
- Equity driven
- Community engaged
- Data supported
- Policy oriented



## Data page

Copy URL

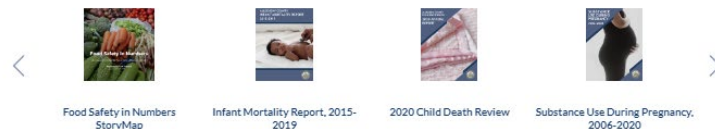
### Allegheny County Community Health Indicators



The Bureau of Data Reporting and Disease Control (DRDC) produces reports using surveillance data that includes Vital Statistics (birth, death, cancer), Reportable Diseases (COVID-19, hepatitis, foodborne disease), and hospitalizations. You can find links to our reports and analyses below. In addition, we provide limited data including COVID-19 cases, births and deaths, and other data at the [Western Pennsylvania Regional Data Center](#) (search for ACHD). If you are unable to locate the information in which you are interested, please consider submitting a [data request](#). Your request may be limited to research purposes and subject to the terms of a legally binding data use agreement.

### Recent Reports

Scroll to view recent data reports from ACHD on topics such as chronic disease, maternal health, infectious disease, and overdoses.



## Adults with COPD

Select a Census Tract Measurement Period: 2021

This indicator shows the percentage of adults who have ever been told by a doctor they have chronic obstructive pulmonary disease (COPD), emphysema, or chronic bronchitis.

#### Why is this important?

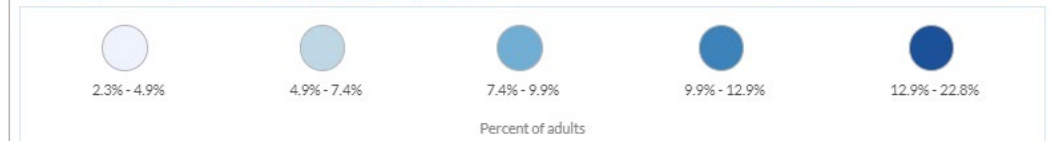
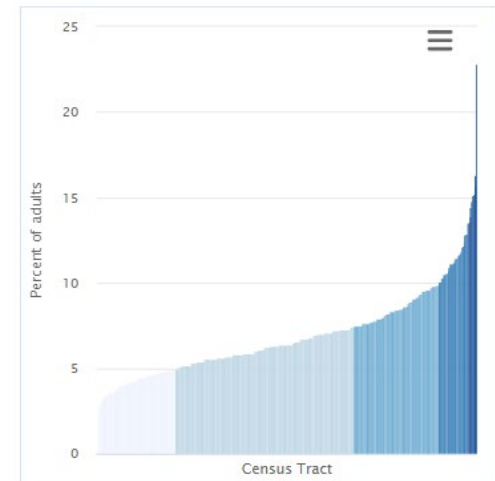
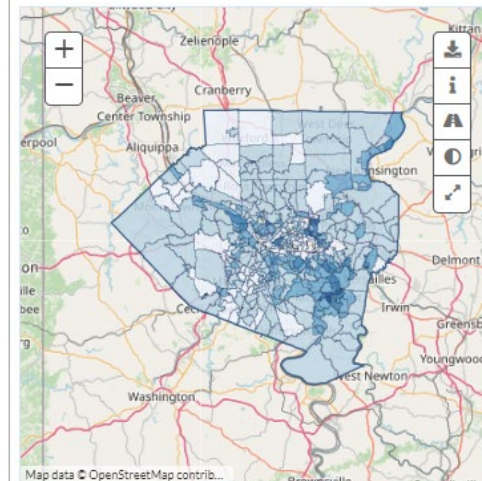
Chronic obstructive pulmonary disease, or COPD, refers to a group of diseases that cause airflow blockage and breathing-related problems. COPD most commonly includes chronic bronchitis and emphysema and usually results from tobacco use, although it can also be a result of pollutants in the air, genetic factors, and respiratory infections. Common symptoms include shortness of breath, wheezing, and chronic cough. Although there is no cure for COPD, smoking cessation, medications, and therapy or surgery can help

More...

County Census Places (Cities) Zip Codes **Census Tracts**

#### SELECT A COMPARISON

Grouped  Allegheny County Census Tracts  PA Census Tracts  U.S. Census Tracts  Allegheny, PA County Value  U.S. Value



# DATA SNAPSHOT

## Track Progress



Physical Health



Behavioral Health



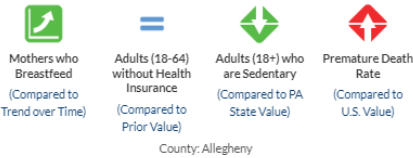
Environmental Health

## Priority Areas

### Physical Health

Our neighbors of all ages seek to reduce their risk of chronic disease and increase life expectancy by engaging in healthy behaviors.

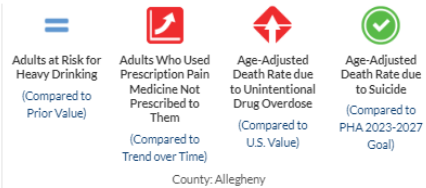
[More Info →](#)



### Behavioral Health

Our community needs better access to mental health and substance use services to support behavioral health and well-being.

[More Info →](#)



### Environment

Our region wants more stable housing in safe, climate-resilient communities.

[More Info →](#)



## Adults (18-64) without Health Insurance ▾

County: Allegheny ▾ Measurement Period: 2020 ▾

This indicator shows the percentage of adults aged 18-64 that do not have any kind of health insurance coverage.

### Why is this important?

Health care access plays an important role in determining health outcomes because it affects whether individuals have access to preventative, chronic disease management, pharmacy, and life-saving medical services. Disparities in access exist within Allegheny County by several social determinants of health, including race, ethnicity, income, and education. ACHD is working with community-based organizations to help enroll people in health insurance, including Medicaid, Children's Health Insurance Program (CHIP), and

[More...](#)

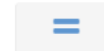
## County: Allegheny 👤

# 6.0%

COMPARED TO ⓘ



PA Value (10.0%)



Prior Value (6.0%)



Trend



PHA 2023-2027 Goal (5.4%)

Source: Pennsylvania Behavioral Risk Factor Surveillance System (BRFSS)  
Measurement period: 2020  
Maintained by: Allegheny County Health Department  
Last update: March 2023

Technical note: Don't know/Not sure, Refused, and Missing responses were excluded from analyses. Data not displayed if <50 responses (considered unreliable).

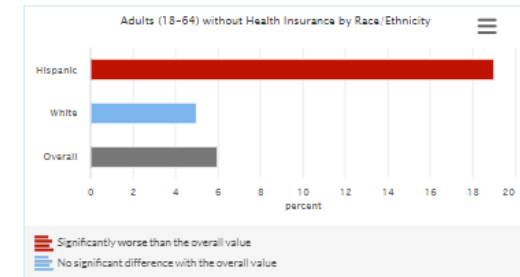
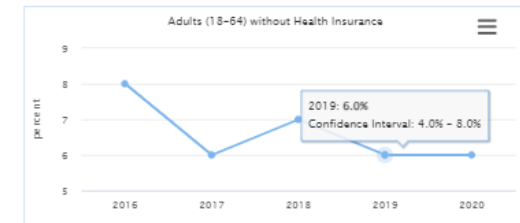
### Graph Selections

#### INDICATOR VALUES

Change over Time

#### VIEW BY SUBGROUP

Race/Ethnicity







## Overarching Goal:

Allegheny County residents live healthy lives as demonstrated by their physical and behavioral health and the environments in which they live, learn, work and play.

## Summary of Priority Goals

### Physical Health Goals:

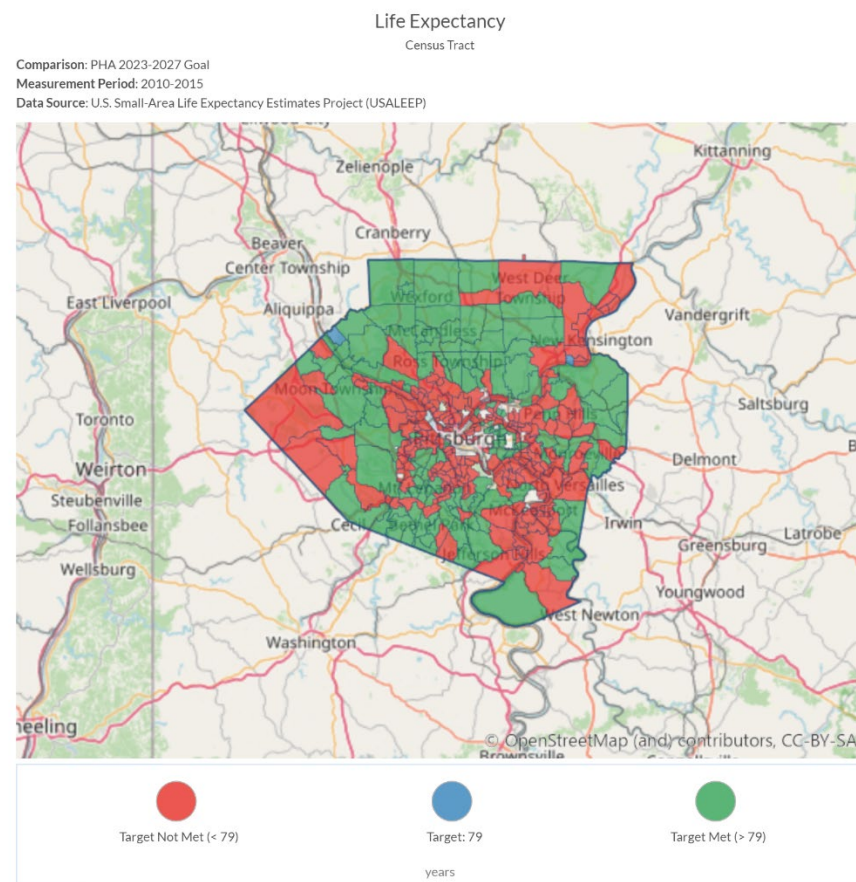
Goal 1. People of all ages engage in behaviors that promote physical health and reduce the risk of chronic diseases.

Goal 2. All people have appropriate places to obtain medical and dental care.

Goal 3. Decrease disparities in life expectancy and chronic diseases in Allegheny County.

# Tracking the PHA

- Priority Goal 3: Decrease disparities in life expectancy and chronic disease in Allegheny County
  - HCI indicator can differentiate census tracts **meeting life expectancy goals** and those **not meeting life expectancy goals**





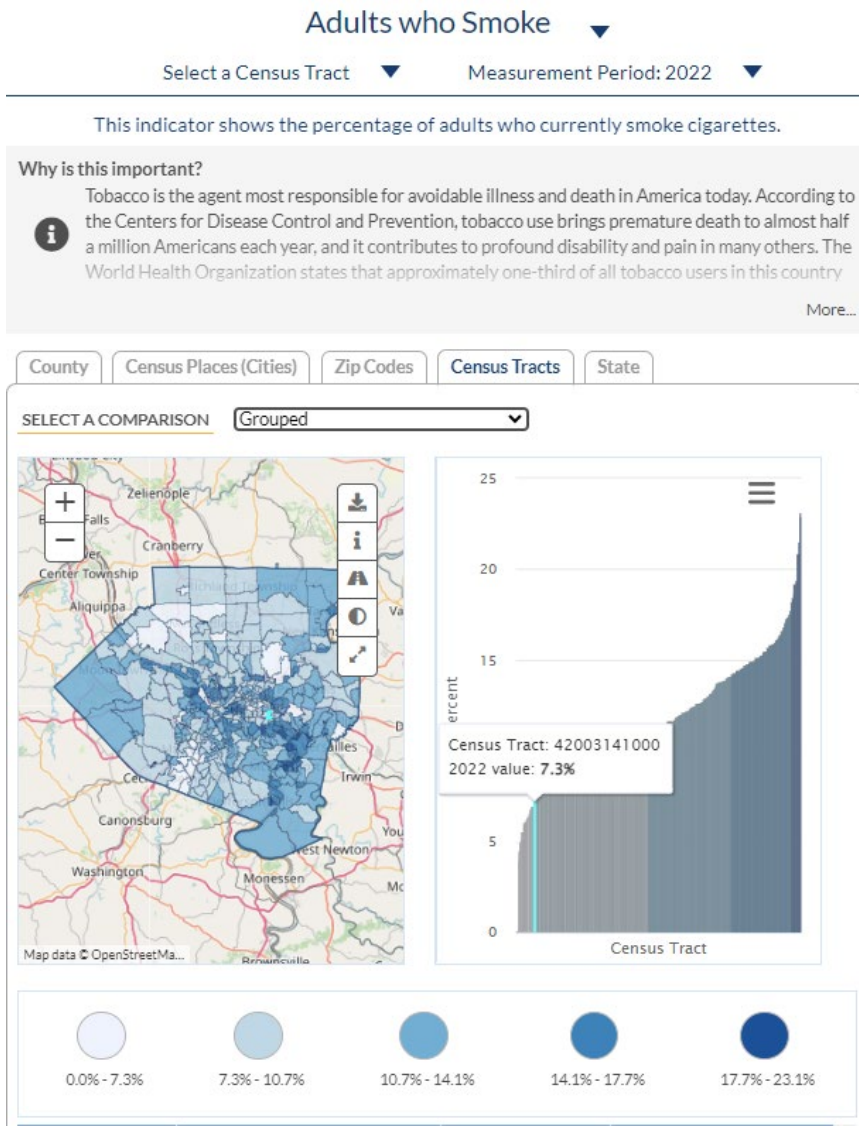


## Priority Area - PHYSICAL HEALTH

- Key Metric
  - By 2027, more than 90% of Allegheny County residents will report having good, very good, or excellent health (baseline 87.4%, 2019) Source: Behavioral Risk Factor Surveillance System (BRFSS)
- Goal 1 - People of all ages engage in behaviors that promote physical health and reduce the risk of chronic diseases.
- Goal 2 - All people have appropriate places to obtain medical and dental care.
- Goal 3 - Decrease disparities in life expectancy and chronic diseases in Allegheny County.



# 1.4 Tobacco Use



## 1.4 Fewer people use tobacco products, including vaping.

1.4.1. Reduce the proportion of children and teens who report tobacco use from 12% (2018) to 10.8% (2027) and e-cigarette use from 27% (2018) to 24.3% (2027).  
 Source: YRBS

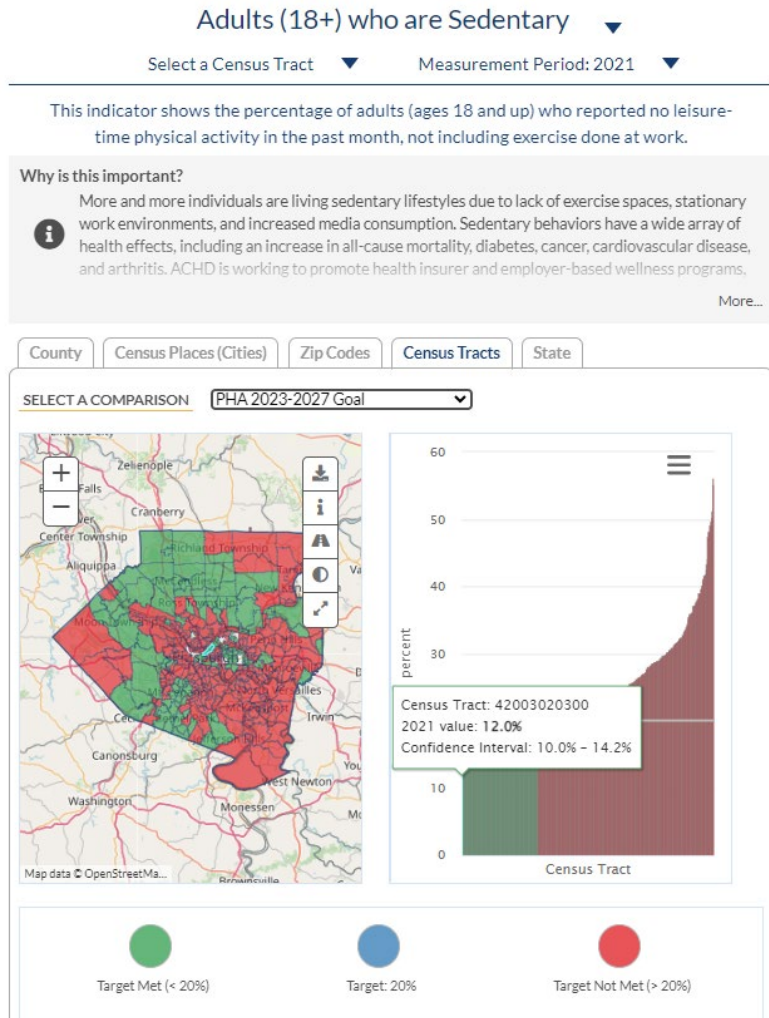
1.4.2. Reduce the proportion of adults who report daily tobacco/e-cigarette use from 12% (2020) to 10.8% (2027).  
 Source: BRFSS

## Chronic Disease

1 Adults who report daily tobacco use  
 Behavioral Risk Factor Surveillance System (BRFSS)



# 1.3 Physical Activity



## 1.3 More children, teens and adults are physically active.

- 1.3.1. Increase the proportion of children and teens who report being physically active each week from 84% (2018) to 88% (2027).  
 Source: YRBS
- 1.3.2. Reduce the proportion of adults who report no leisure-time physical activity in the past month from 22% (2020) to 20% (2027).  
 Source: BRFSS
- 1.3.3. Add at least 50 miles of accessible trails for recreational use by 2027, with at least 15 miles in environmental justice communities.  
 Source: Allegheny County Economic Development (ACED)





## Priority Area - BEHAVIORAL HEALTH

- Key Metric
  - By 2027, fewer than 11% of residents will answer ‘not good’ for 14 or more days to the following question: “Now thinking about your mental health, which includes stress, depression and problems with emotions, for how many days during the past 30 days was your mental health not good? (Baseline 14%, 2019). Source: BRFSS
- Goal 4 - People have access to behavioral health services, including treatment for substance use disorders.
- Goal 5 - People in Allegheny County will participate in programs and activities that support mental health and well-being.





# 4 Overdose

- Home
- Data and Definitions
- Fatal Trends
- Fatal Details
- Overdose Trends
- Overdose Details

## Allegheny County Fatal Overdose Details



Deaths:  
**7,649**  
Deaths

### Dashboard Information

This dashboard section displays **Demographic**, **Geographic**, and **Substance** information related to fatal overdose deaths. All data displayed in the dashboard are controlled by the section titled **Customize Selection**.



Hover over numbers, graphs, and the map for more information

### Customize Selection

#### Substance(s)

All Substances

#### Year(s)

(All)

#### Location(s)

(All)

#### Age Group(s)

(All)

#### Sex

(All)

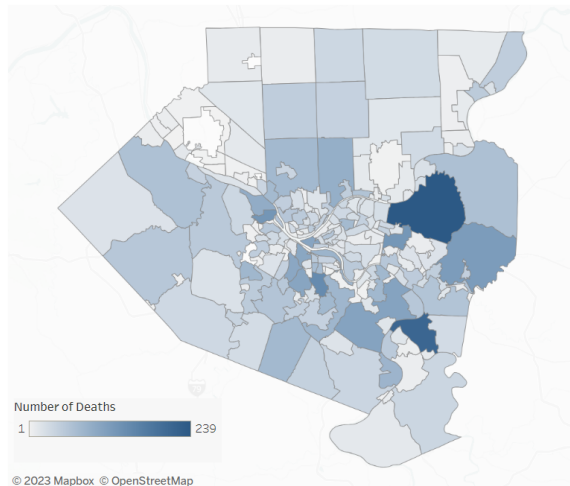
#### Race(s)

(All)

11/16/2023 11:49:05 AM

### Geographic Information

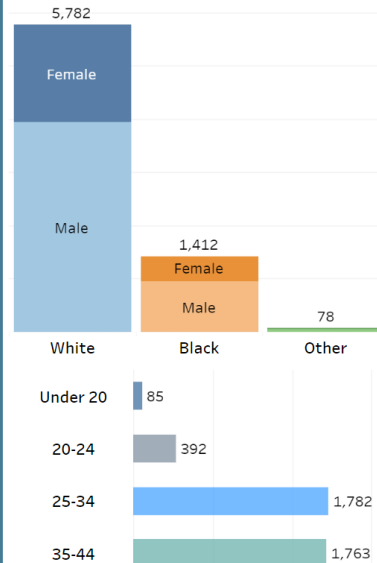
Displays the distribution of fatal overdose death locations in Allegheny County by municipality and Pittsburgh neighborhood, as well as the overall rate and race rates.



© 2023 Mapbox © OpenStreetMap

### Demographic Information

Displays the overall distribution of fatal overdose deaths by race/sex and age group.



Map Location	Deaths	Death Rate (per 1,000)	Black Death Rate (per 1,000)	White Death Rate (per 1,000)	Other Death Rate (per 1,000)
Aleppo	2	1.0	0.0	1.1	0.0

### 4.4. Fewer people die from an overdose.

4.4.1. Reduce the overdose mortality rate from 58.8 per 100,000 (2021) to 53 per 100,000 (2027).

Source: Allegheny County Office of Medical Examiner (ACOME) (Allegheny County Overdose Dashboard) and PA Death Certificates

### 4.6. The racial disparity in deaths from overdose decreases.

4.6.1. Reduce the overdose mortality rate for Black residents from 115.3 per 100,000 (2021) to 100 per 100,000 (2027).

Source: ACOME (Allegheny County Overdose Dashboard)

2

### Racial disparity in overdose mortality rate

ACOME

#### All residents:

**58.8** per 100K 2021 → **56.5** per 100K 2022





## Priority Area - ENVIRONMENT

- Key Metric
  - By 2027, at least 98% of people in Allegheny County will respond “safe” or “extremely safe” to the following question, “How safe from crime do you consider your neighborhood to be?” Baseline was 95% in 2017. Source BRFSS
- Goal 6 - More people live in stable and safe housing.
- Goal 7 - Fewer people experience violence in their homes and communities.
- Goal 8 - More residents live in communities that are prepared to adapt to and absorb the impacts of climate change.

# Environment

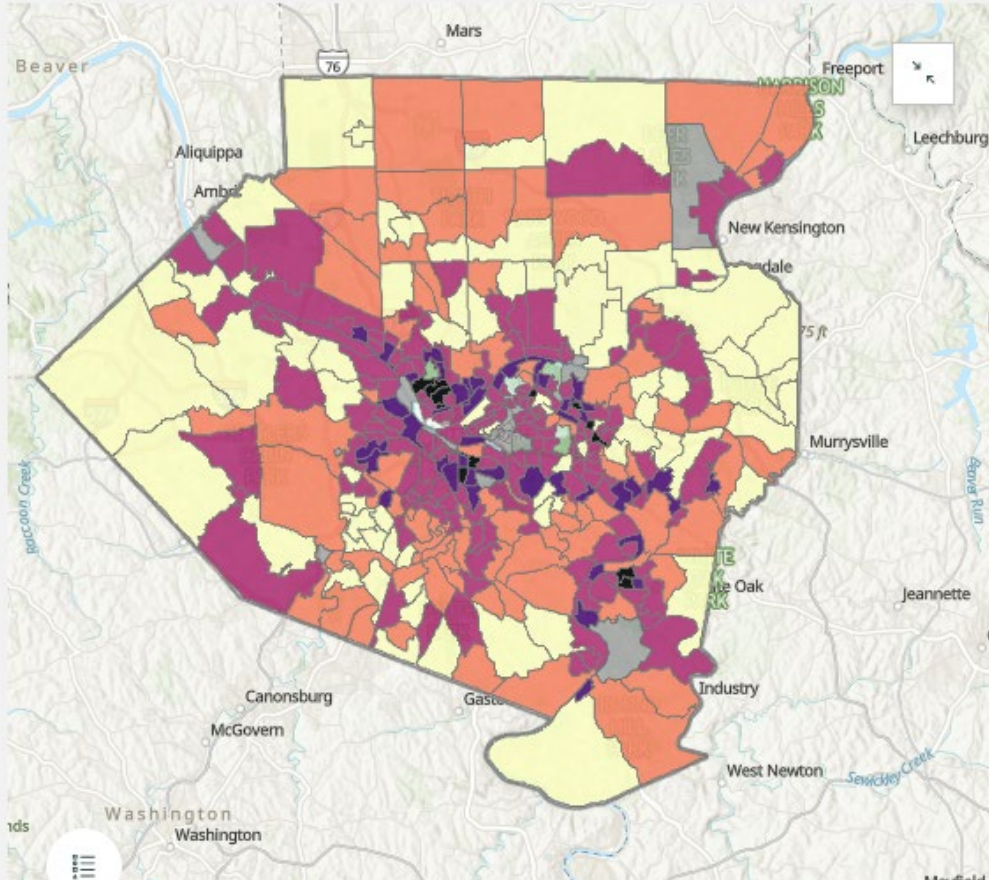
## 6.3. Fewer children have elevated blood lead levels.

6.3.1. Reduce the proportion of children with an elevated blood lead level (above 3.5µg/dL) from 2.7% (2021) to 2.0% (2027).

Source: PA National Electronic Disease Surveillance System (PA NEDSS)

### Maps and Testing Data

#### Testing Story Map



3

Children with elevated blood lead level (BLL) > 3.5 µg/dL  
PA-NEDSS

**2.7%** → **3.1%**  
2021                      2022

The highest rates of children <6 years with elevated BLL ( $\geq 5$  µg/dL) occurred in Knoxville (13.9%), Perry South (11.1%), and Beltzhoover (11.0%) in 2017-2021

PA-NEDSS

In 2022, 110 (0.6%) children had a confirmed BLL above 10 µg/dL

PA-NEDSS





# Environment

## Allegheny County Air Quality

Today

Over Time

FAQs

All times are reported in Eastern Standard Time (EST), in accordance with EPA standards.

Please note that the EPA's use of EST means that when Daylight Savings Time is in effect, the reporting hours will be off by an hour.

### SELECT POLLUTANT

- Fine Particulate Matter (PM2.5)
- Ozone
- Sulfur Dioxide (SO2)

### What is PM2.5?

Fine particulate matter (PM2.5) consists of a mixture of solids and liquid droplets so small they are only visible with an electron microscope. These particles can be inhaled and may contain hundreds of different chemicals - some are released into the air directly, while others form when they react with other pollutants in the atmosphere.

**Causes:** power plants, motor vehicles, forest fires, and industrial processes

**Sensitive groups:** children, older adults, people with heart disease, and people with lung disease

### PM2.5 Monitor Locations

Click location on map to see hourly data for that monitor  
Click map or hit "escape" to clear selection



### Highest Most Recent PM2.5 AQI

# 58

12/21/2023 2:00 PM EST  
Occurred at: Liberty

AQI: The site's current rolling 24-hour average air quality index for PM2.5.

### Air Quality Index (AQI)

Good
Moderate
Unhealthy for Sensitive Groups
Unhealthy
Very Unhealthy
Hazardous

## 8.3. Air quality continues to improve.

8.3.1. By 2027, reduce the annual average PM2.5 concentration by at least 12% (from 9.7  $\mu\text{g}/\text{m}^3$  in 2021 to 8.5  $\mu\text{g}/\text{m}^3$  in 2027, on a countywide average basis).  
*Source: ACHD Air Quality Planning and Data Analysis Program*

8.3.2. By 2027, reduce the number of days per year when sulfur dioxide (SO2) exceeds an AQI of 50 (from 36 in 2021 to 26 in 2027).  
*Source: ACHD Air Quality Planning and Data Analysis Program*

9.7  $\mu\text{g}/\text{m}^3$  2021 → 8.5  $\mu\text{g}/\text{m}^3$  2022

Priority Area 3

## Environmental Health

1

Annual average PM2.5 concentration  
*ACHD Air Quality Program*



EPA National Ambient Air Quality Standard is 12  $\mu\text{g}/\text{m}^3$ , but proposed revising to 9-10  $\mu\text{g}/\text{m}^3$  earlier this year

The 2019-2021 average PM2.5 concentration across the 7 monitors in the county varied between 6.3  $\mu\text{g}/\text{m}^3$  (North Park) and 11.2  $\mu\text{g}/\text{m}^3$  (Liberty)

*ACHD Air Quality Report 2021*







## Thank you

- For your time today
- Should you have additional questions about
  - our 5-year health improvement plan
  - Accessing data
  - Your role in improving the health of Allegheny County

Please contact us [online](#)

Request [data](#)

Request a [speaker](#)





# Request Permission To Go To Public Comment



# Public Comments

- Commenters will be allowed 3 minutes each to address the Board