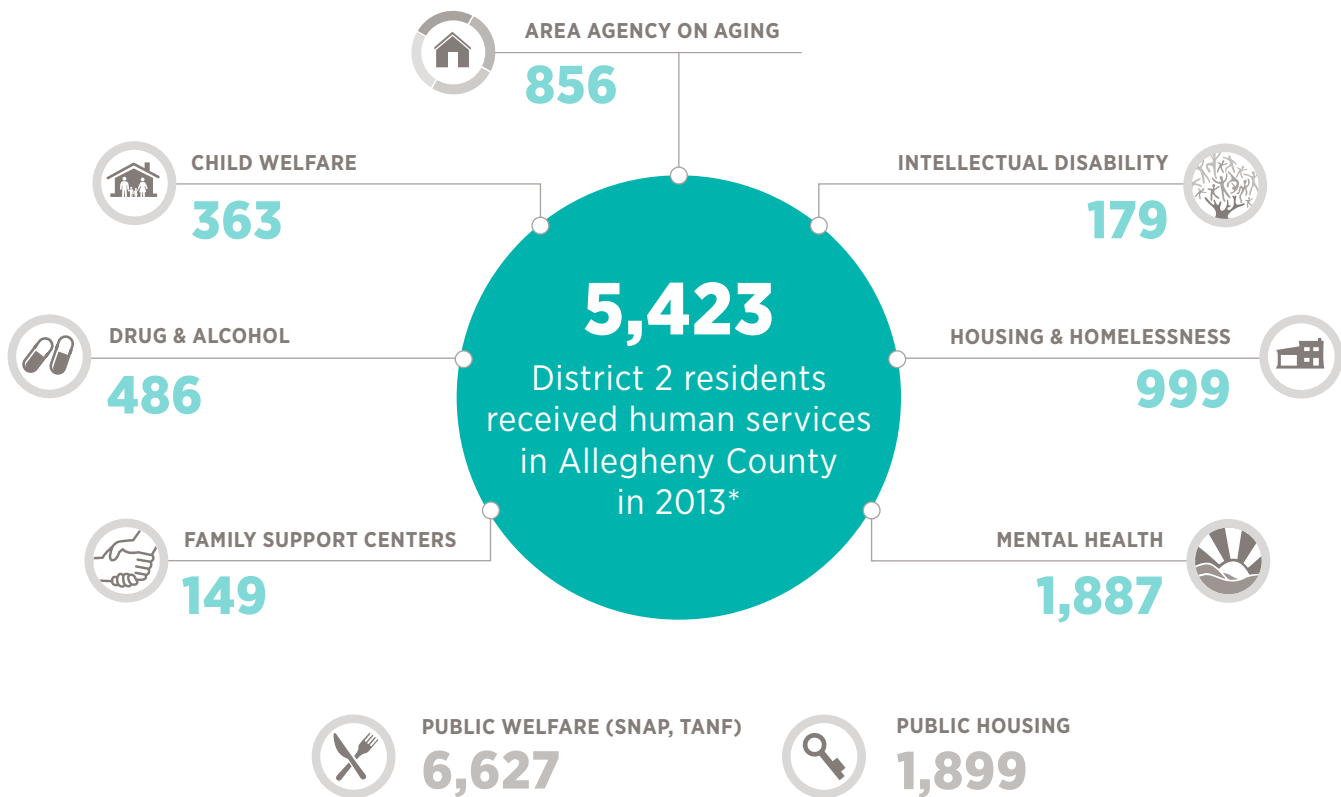
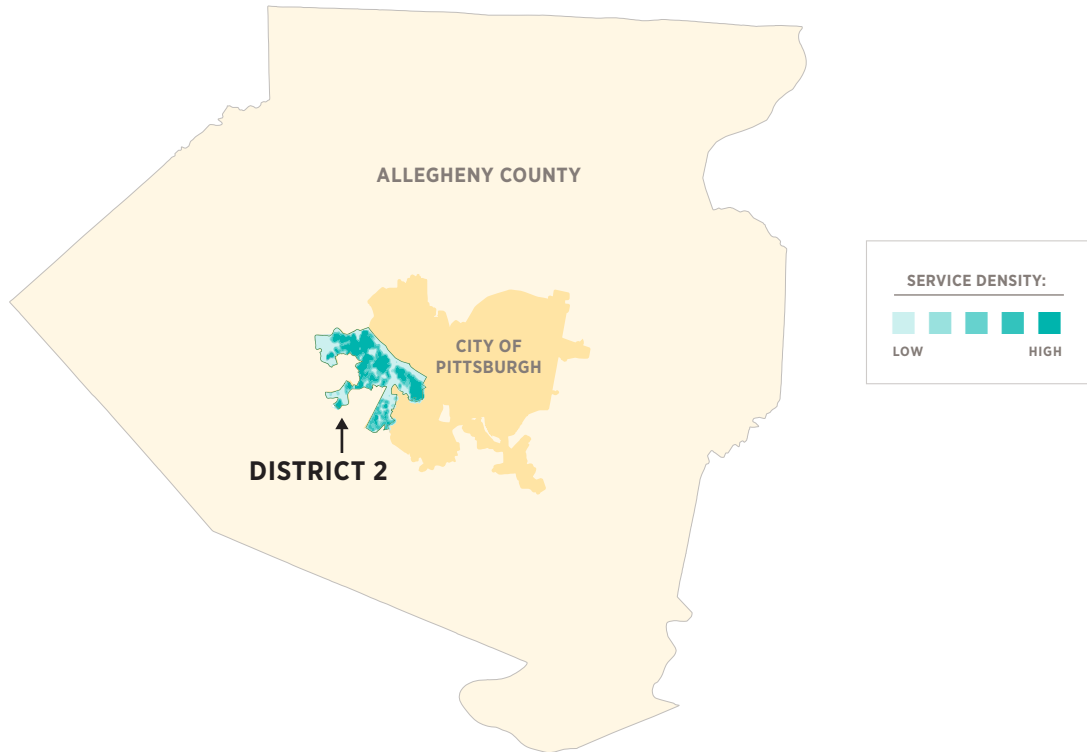


Pittsburgh City Council District 2 • Theresa Smith

2013 HUMAN SERVICES INVOLVEMENT



*Data reflects human services involvement administered by the Allegheny County Department of Human Services (DHS) as well as support services provided by the PA Department of Human Services (TANF, SNAP) and local housing authorities (HACP, ACHA). Total data does not include the thousands of additional persons who received DHS services without being tracked as individuals in DHS applications.

For more information about DHS and human services in Allegheny County, please contact:

Brandon Forbes, Government Affairs & Policy Coordinator, at brandon.forbes@alleghenycounty.us, 412-350-3972.