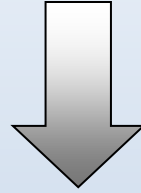




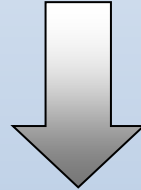
# **Presentation Outline**

- **Overview of Mental Health System**
- **Overview of Department of Human Services**
- **Overview of Office of Behavioral Health (OBH)**
  - ❖ **Comprised of 3 Bureau's:**
    - Adult Mental Health
    - Child/Adolescent Mental Health
    - Drug and Alcohol
  - ❖ **Treatment Supports**
  - ❖ **Adjunct Service Supports to Treatment**
  - ❖ **Advocacy Services**
  - ❖ **Resources for Problem Resolution**
  - ❖ **Residential Programs and Services**

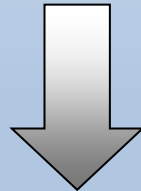
**Office of Mental Health and Substance Abuse Services (OMHSAS)**



**Allegheny County Dept. of Human Services**



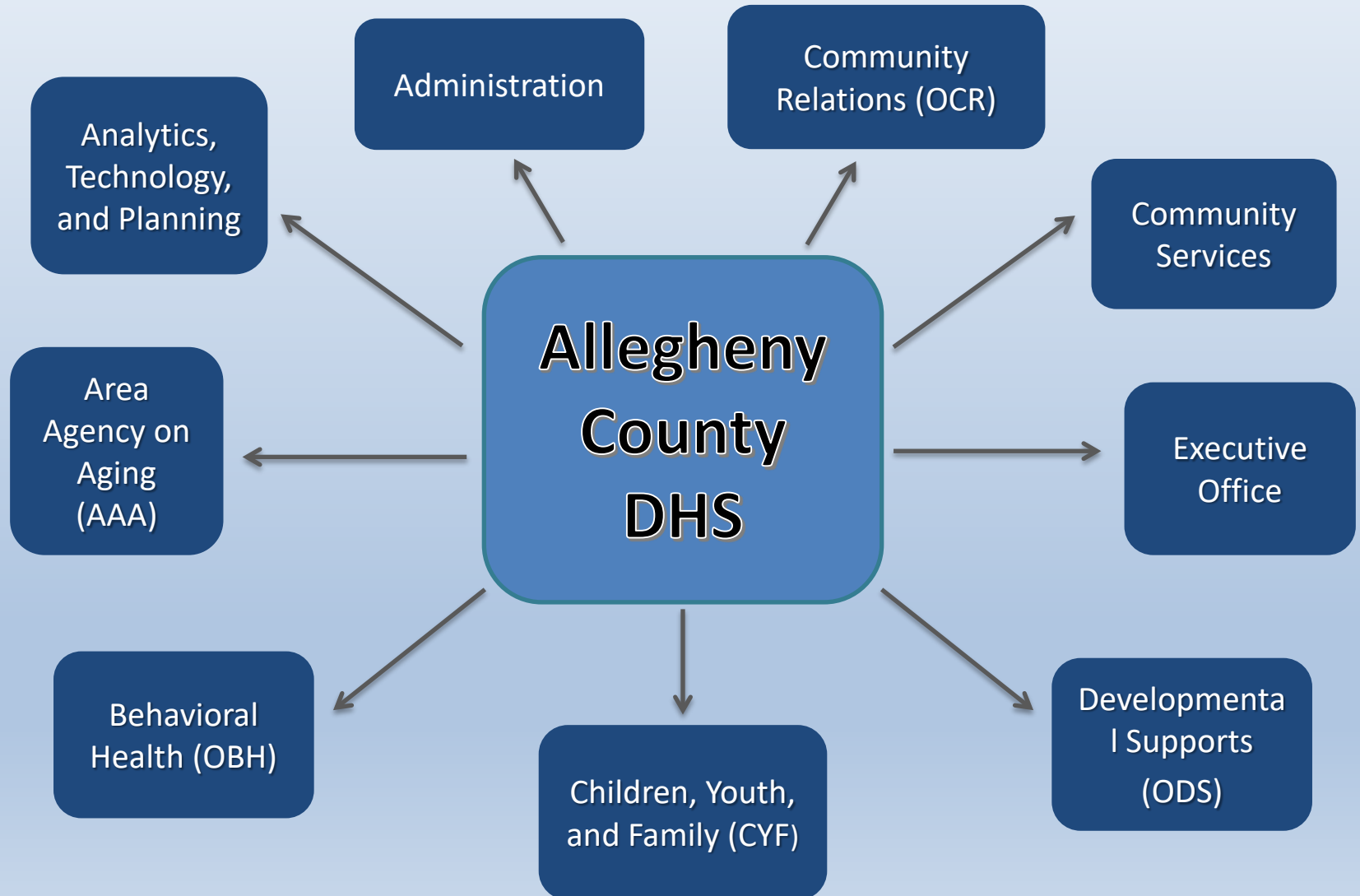
**Office of Behavioral Health**



**Providers (YOU**



# Allegheny County Department of Human Services



# **Allegheny County Department of Human Services Offices**

## **➤ Executive Office**

## **➤ Support Offices**

- ❖ AIMS – Office of Administration
  - DHS Operations Management
- ❖ OCR – Office of Community Relations
  - <http://www.alleghenycounty.us/Human-Services/About/Offices/Community-Services.aspx>
  - Allegheny Link
  - Directors Action Line
- ❖ DARE – Office of Data Analysis, Research and Evaluation

# **Allegheny County Department of Human Services Offices**

## **➤ Integrated Program Offices**

### **❖ AAA- Area Agency on Aging**

- For individuals 60 and older
- AAA Senior line: 412-350-5460

### **❖ OBH – Office of Behavioral Health**

- Drug and Alcohol
- Child/Adolescent MH
- Adult MH

### **❖ CYF – Office of Children, Youth and Families**

### **❖ ODS – Office of Developmental Supports**

- Must be diagnosed with an intellectual disability prior to age of 22 to qualify
- ODS main number: (412) 253-1399

# **ODP, Autism, Intellectual Disability (ID) and Developmental Disability (DD) Resources**

- [www.MyODP.org](http://www.MyODP.org)
- Autism Connection of PA: <https://autismofpa.org/>
- PA ARC: <http://thearca.org/>
- American Psychiatric Association:  
[www.psychiatry.org/psychiatrists/practice/dsm/educational-resources/dsm-5-fact-sheets](http://www.psychiatry.org/psychiatrists/practice/dsm/educational-resources/dsm-5-fact-sheets)

# **Office of Behavioral Health**

## **Child & Adolescent Bureau:**

- Program Specialists
- School Based Liaisons
- Behavior Health Specialists
- Early Intervention Coordinator
- Education Specialists

## **Adult Bureau:**

- Program Specialists
- Community Integration Team
- CHIPP Team
- Residential Specialists
- Justice Related Services

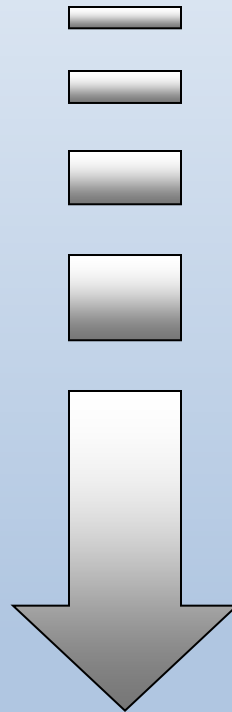


# County Scripts

- See **Handouts Folder** on the **SC New Hire Training Page** of the website
- For questions about the **OBH Pharmacy Program**, call  
**(412) 350-7394**

# Service Continuum

*Least Restrictive*



*Most Restrictive*

# **Service Continuum**

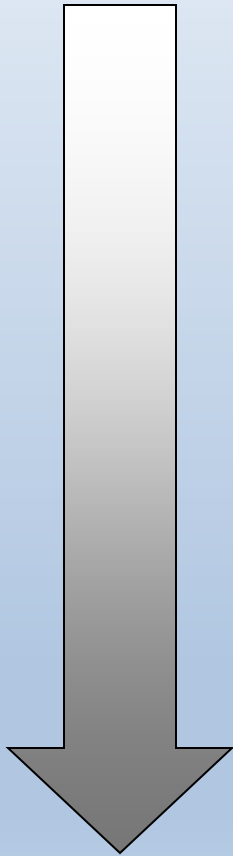
❖ Adult Continuum of Care

❖ Child & Adolescent Continuum of Care

# **Children's Team Staff**

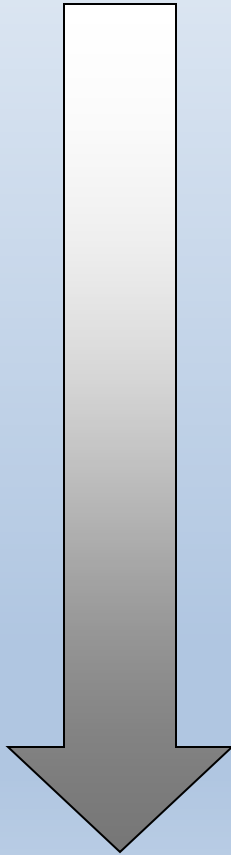
- School Based Liaisons
- Behavioral Health Specialists
- Monitors
- Continuity of Care Team

# Continuum of Care Youth Community Based Services



- Outpatient Services
- Intensive Behavioral Health Services (wrap around)
- Community and School Based Behavioral Health Team
- First Episode Psychosis
- Multi-systemic Therapy
- Family Based Mental Health Services
- Mobile Transition Age Youth services
- Community Treatment Team
- Partial Hospitalization

# Continuum of Care Youth Out-Of-Home Services



- Psychiatric Short Term Residential Treatment Facility (Previously DAS)
- Community Residential Rehabilitation
- Residential Treatment Facility (RTF)
- RESPOND
- Inpatient Hospitalization

# **Youth Outpatient**

- **School based outpatient**
- **Office setting outpatient**
- **Intensive outpatient**
  - ❖ Multiple different programs available geared toward assisting with a specific diagnosis; generally, 3 days a week for individual and group therapy
    - CABS
    - STAR
    - STEP
    - OCD
    - Charlie Health – Commercial Insurance, virtual IOP
- **Paid for by MA or Private Insurance**

# **Youth Intensive Behavioral Health Services**

- **Delivered in home, school, or community setting**
- **Mobile Therapist, Behavioral Health Technician, Behavioral Consultant**
- **Written order required for services**
  - ❖ Written order can be completed by licensed professional
  - ❖ Written order is good for 12 months
- **Paid for by MA or commercial insurance**



# **Youth Community and School Based Behavioral Health Team**

- Delivered in home and school setting
- Assigned to specific school buildings
- Team of clinicians provide case management, 24/7 crisis response, classroom support, family therapy, individual therapy, group therapy, and summer program
- Paid for through MA only

# **First Episode Psychosis**

- WFS ENGAGE available to ages 15-25
- UPMC STEP available to ages 14-40
- Can be referred by anyone (self-referrals included), evaluation will be completed to determine eligibility
- Available to individuals experiencing their first psychotic episode
- Individual therapy and Psychiatry services
- Paid for by MA or commercial insurance

# **Youth Multisystemic Therapy**

- **Available ages 12-18**
- **Provided in the home, school and community setting**
- **Aimed to provide support for families caring for youth with intensive psychosocial needs**
  - ❖ **Family involvement is required**
- **Youth display issues with authority, conduct related problems, problems with police, juvenile probation, D&A related concerns**
- **6 months in length**
- **Meet several days a week**
- **Must be referred by psychologist or psychiatrist**
- **Paid for by MA**

# **Family Based Mental Health**

## **Services**

- Delivered in home, school and community setting
- Team of 2 clinicians provide intensive therapy utilizing a family systems model
- Work with the family several days a week
- Includes service coordination and 24/7 crisis response
- 6-8 months in length
- Must be referred by psychologist or psychiatrist
- Designed to prevent out-of-home care
- Paid for by MA only

# **Mobile Transition Age Youth**

- Youth Ages 18-25
- Team delivered service in home, community and school setting
- Available to youth who are aging out of the foster care system or who are living independently
- Provides support to young person on mental health or drug and alcohol issues
- Supports youth in gaining independent living skills, employment, housing, etc.
- Referral must be made by mental health professional or DHS professional
- Paid for my MA only

# **Community Treatment Team**

- Available for transition age youth Ages 18-26
- Services provided in the home and community setting where individual resides
- CTT consists of service coordination, peer specialist, therapist, medication management, nurse
- Youth must have history of inpatient hospitalizations (3+ in last 12 months) and previous service history
- Primary diagnosis group – bipolar, schizophrenia, schizoaffective disorders
- Length of stay depends on youth's needs
- Must be referred by psychiatrist or psychologist
- Paid for by MA

# Youth Partial Hospitalization

## **Acute Partial**

- 10-15 days in length
- Attend during the day instead of attending educational programming
  - ❖ Educational programming needs are met through communication with the partial and the school district
- Receive individual, group, family therapy and medication management
- Referral through MH professional
- Paid for through MA or Private Insurance

## **Non-Acute Partial**

- Length of stay is an average of 6-9 months
- Attend during the day instead of attending educational programming
  - ❖ Educational programming needs are met through communication with the partial and the school district
- Can be referred by school or MH professional
- Receive Individual, group, family therapy and medication management
- Paid for through MA or Private Insurance

# **Youth Partial Hospitalization**

## **➤ School Based Partial**

- ❖ Length of stay could be several months depending on need of student
- ❖ Attend during the day and receive mental health and educational programming
  - Educational needs are met by teachers and programming at the Approved Private School
- ❖ Students must receive referral from school district through the IEP team
- ❖ Partial program will conduct an initial assessment to determine eligibility
- ❖ Paid for by MA or commercial insurance and school district



# **Youth Psychiatric Short Term Residential Treatment Facility**

- Services provided in out of home setting
- Up to 60-90 day stay at program
- Receive individual therapy, group therapy and medication management
- Students receive educational programming at the site
- Families are encouraged to visit and spend time participating in therapeutic activities
- Must be referred by medical doctor, or mental health professional
- Paid for by MA or private insurance

# **Youth Community Residential Rehabilitation** **(Individual Residential Treatment)**

- Services provided in out of home setting
- Length of stay determined by needs of youth
- Youth will be placed with a trained family in a foster care like setting
- Youth will receive regular therapy and medication management as needed
- Must be referred by psychiatrist or psychologist through a Best Practice Evaluation
- Treatment is paid for by MA, Room and Board is paid through other systems (ex: CYF or JPO)

# **Youth Residential Treatment Facility**

- Services provided in out of home setting
- Generally 6-8 month length of stay
- Youth receive individual and group therapy, and medication management
- Families are encouraged to participate in regular family sessions
- Youth receive educational programming at an on-grounds school, or in the local school district
- Must be referred through a best practice evaluation from psychiatrist
- Paid for by MA and Commercial Insurance

# **RESPOND Mobile Treatment Team**

- RESPOND can provide consultation to current treatment teams
- RESPOND homes (4 total beds for the county) have 2:1 staff present 24/7
- Waitlist is often 1-2 years
- Length of stay is 1-2 years
- Requires a written order from a psychiatrist
- Mobile Treatment is paid through MA
- Room and Board is paid through ODS or OBH

# **Youth Inpatient Hospitalization**

- Services provided in locked hospital facility
- Length of stay is determined by need, but is generally only a few days in length
- Can be voluntarily or involuntarily committed
- Youth must be a danger to themselves or others in order to meet criteria for admission
- Evaluation will occur at the hospital in order to determine if they meet medical necessity and will be admitted
- Paid for by MA or commercial insurance

# Adjuncts to Treatment

## Youth

- **Service/Support Coordination**
  - ❖ (AFIT) Alliance for Infants and Toddlers
  - ❖ Administrative
  - ❖ Blended
- **Student Assistance Program**
  - ❖ SAP Coordinator
- **Joint Planning Team/Hi-Fidelity Wraparound**
- **Certified Peer Specialists**
- **Crisis Services**
  - ❖ CACTIS (Child and Adolescent branch of RESOLVE)
    - 412-864-5067
    - [CACTISreferral@upmc.edu](mailto:CACTISreferral@upmc.edu)

## Adult

- **Service Coordination**
- **Psychiatric Rehabilitation**
- **Social Rehabilitation**
- **Drop In Centers**
- **Crisis Services**
  - ❖ RESOLVE Crisis Network
    - 1-866-796-8226 (1-866-7-YOU CAN)
- **Vocational/Educational**

# **Referrals to Services**

- **Certified Peer Specialist, Supported Employment, Psych/Social Rehab, and Supportive Housing**
  - ❖ Contact provider directly to make referral
- **ECSC and Mobile Meds**
  - ❖ “Specialized Services” referral form: sample form located on SC New Hire training site
- **Youth Support Partner**
  - ❖ 412-442-8977

# **Additional Supports, Services and Advocacy**

## **➤ Peer Support**

## **➤ Warm-line/Warm and Friendly Call Program**

❖ Warmline # 1-866-661-9276 (WARM)

## **➤ Advocacy Agencies**

❖ Disability Rights of PA (DRP)

❖ Allegheny Family Network (AFN)



# **Additional Supports, Services, and Advocacy**

- **Allegheny County Coalition for Recovery (ACCR)**  
<http://coalitionforrecovery.org>
  - ❖ Mission
  - ❖ 5 Sub-committees
- **NAMI – National Alliance on Mental Illness**
- **Community Support Program (CSP)**
  - ❖ Committee comprised of stakeholders including persons in services, persons with lived experiences, family members and providers.
  - ❖ Purpose is to help the system become more recovery oriented

# **Mitigating Complex Problems**

## **➤ Internal Processes**

### **➤ Team Meetings or Case Conferences**

- ❖ Can be requested by anyone

### **➤ County Integrated Service Planning Meetings**

- ❖ Typically requested by one of the involved provider. Request goes to county

## **➤ CSP/ACSP**

### **➤ Disposition Planning**

- ❖ Formal request submitted to county by inpatient unit
- ❖ Anyone on treatment team can request a disposition meeting

# **Problem Resolution**

- **Agency Complaint and Grievance Procedures**
- **Director's Action Line (DAL)**
  - ❖ 1-800-862-6783
- **Consumer Action Response Team (CART)**
  - ❖ 412-281-7333
- **Community Care**
  - ❖ 1-800-553-7499
- **Office of Mental Health Substance Abuse Services**
  - ❖ 412-565-5226

# **Housing Resources**

- **Allegheny County Housing Authority**
  - ❖ 412-335-8940
- **Housing Authority of the City of Pittsburgh**
  - ❖ 412-456-5000
- **McKeesport Housing Authority**
  - ❖ 412-673-6942
- **Housing Authority of the City of Pittsburgh-Handicap accessible**
  - ❖ 412-456-5282
- **Pittsburgh Community Services Inc. (Bi-Weekly rental information)**
  - ❖ 412-904-4713
- **Dom Care Program (Area Agency on Aging)**
  - ❖ 412-350-5460
- **Bureau of Human Services Licensing (Personal Care Home Information)**
  - ❖ 412-565-5614
- **Allegheny County “The Link”**
  - ❖ 1-866-730-2368
- **Allegheny County Health Dept.**
  - ❖ 412-350-4046