

ALLEGHENY COUNTY  
HEALTH DEPARTMENT

SCHOOL  
IMMUNIZATION  
REPORT  
2025-26



# ALLEGHENY COUNTY SCHOOL IMMUNIZATION REPORT 2025-26

A publication of the

**ALLEGHENY COUNTY HEALTH DEPARTMENT  
BUREAU OF Data, Reporting, and Disease Control**

**Iulia Vann, MD, MPH**  
Director

May 2026

Please address questions or comments to

**Allegheny County Health Department**  
Infectious Disease Epidemiology Program  
542 Fourth Ave.  
Pittsburgh, PA 15219  
412-687-2243  
[idepi@alleghenycounty.us](mailto:idepi@alleghenycounty.us)

# Executive Summary

To ensure that schools in Allegheny County are complying with state and county immunization regulations, the Allegheny County Health Department (ACHD) requires all schools (public, private, independent, parochial, religious and charter) to submit the immunization status of their students annually.

This report summarizes the immunization data from the 2025-26 school year. Data are primarily presented by school type or by grade. Also included are data from previous school years as reference points.

## Highlights:

- The percentage of students with all immunizations required for school entry was 93.8 percent in December 2025
- Kindergarten (91.8%), seventh grade (91.5%), and twelfth grade (88.9%) had the lowest percentage of students with all required vaccines. Additional doses of certain vaccines are required to enter seventh and twelfth grades.
- The majority of Allegheny County schools (60.5%) had at least 95 percent of their students fully immunized, a decrease from the previous school year (62.4%)
- In Allegheny County, 0.5 percent of all students were provisionally enrolled and 1.4% were noncompliant at the time of the survey. A higher percentage of students were provisionally enrolled or noncompliant in kindergarten (3.5%), seventh grade (3.5%), and twelfth grade (4.8%)
- Overall, 3.8 percent of students submitted medical or religious/moral exemptions. Students at parochial/religious schools had the highest percentage of religious/moral exemptions (8.5%)

# Introduction

To maintain healthy students and communities, all students enrolled in kindergarten through twelfth grade in Pennsylvania are required to have the appropriate number of doses of the following vaccines: diphtheria, tetanus, and pertussis (DTaP); measles, mumps, and rubella (MMR); hepatitis B; polio; and varicella.<sup>1</sup> For students enrolled in seventh grade, two additional vaccines are required at a single dose each: tetanus, diphtheria, and pertussis (Tdap) and meningococcal conjugate vaccine (MCV).<sup>1</sup> An additional dose of MCV is required for all twelfth graders.<sup>1</sup>

Provisional enrollment allows students who have at least one dose in a multi-dose vaccine series to start the school year if there is an explicit plan in place for either receiving or scheduling the remaining required doses within the five-day provisional period. If the provisional period expires before the student receives, or has scheduled to receive, all required doses, the student is denied admission to school. The provisional period was shortened from eight months to five days beginning with the 2017-2018 school year.

Students may also be admitted to school without being fully immunized if their parents have submitted paperwork for an exemption. Exemptions can be medical, religious, or moral/philosophical, and they do not expire. Medical exemptions can be obtained for students who have a condition for which a vaccine is contraindicated and must be documented by the student's physician. Religious and moral exemptions are submitted in writing by the student's parent or guardian. Students experiencing homelessness are exempt under the McKinney-Vento Act. Students attending school without all immunizations and without an exemption are considered noncompliant.

The ACHD requires all schools (public, private/independent, parochial/religious, and charter) to submit data each school year detailing total enrollment, number of students fully immunized, number of students enrolled provisionally, and the number of students with medical or religious/moral exemptions, per Article X of ACHD's Rules and Regulations.<sup>2</sup> The Health Department collects data on every grade to get a comprehensive view of the immunization coverage. The Pennsylvania Department of Health (PADOH) collects data on kindergarten, seventh grade, and twelfth grade students in December from every school in the commonwealth, each year.

---

<sup>1</sup>Commonwealth of Pennsylvania, 28 Pa. Code Part III, Ch 23, Subch C §23.86. *School Reporting*. (Accessed July 7, 2024), available from <http://www.pacode.com/secure/data/028/chapter23/subchapCtoc.html>

<sup>2</sup>Allegheny County Health Department, *Article X: School Health Immunization*. (Accessed July 7, 2024); available from <https://www.alleghenycounty.us/files/assets/county/v/1/government/health/documents/human-health-regulations/article-10-school-immunizations.pdf>

Vaccines that are not required for school entry in Pennsylvania but are recommended for children by the American Academy of Pediatrics include those for rotavirus, *Haemophilus influenzae* type B, pneumococcal disease, influenza, hepatitis A, COVID-19 and human papillomavirus.<sup>3</sup> The list of required vaccines for school entry varies by state.

This report utilizes data submitted in December 2025<sup>4</sup> by Allegheny County schools to summarize the immunization status of students for the 2025-26 school year for required vaccines. The ACHD created and issued the survey in October 2025, with responses due on December 31, 2025. After the due date, reminders by phone and email were sent to schools who had not yet submitted, and school nurses were contacted to correct mistakes. In March 2025, the survey was closed and the data were finalized. The ACHD was responsible for collecting, cleaning and analyzing the data.

---

<sup>3</sup> American Academy of Pediatrics, *Recommended Child and Adolescent Immunization Schedule for Ages 18 years and Younger*. Accessed April 20, 2026. Available from: <https://downloads.aap.org/AAP/PDF/AAP-Immunization-Schedule.pdf>

<sup>4</sup> Data updated as of March 2026

# Student Immunization Coverage

Immunization data were reported for 157,624 students enrolled in 370 Allegheny County schools in December 2025. Of the students at the 370 schools reporting data, a majority (83.9%) attended public schools, with the fewest number of students (4.4%) enrolled in private/independent schools (Table 1).

**Table 1. Allegheny County School Enrollment, School Year 2025-26**

School Type	Number of Students	Percent of Students	Number of Schools	Percent of Schools
Charter	7,971	5.1%	23	6.2%
Parochial/Religious	10,414	6.6%	51	13.8%
Private/Independent	6,971	4.4%	49	13.2%
Public	132,268	83.9%	247	66.8%
<b>Total</b>	<b>157,624</b>	<b>100.0%</b>	<b>370</b>	<b>100.0%</b>

The overall percentage of students with all immunizations required for school entry was 93.8 percent for the 2025-26 school year (Table 2).

**Table 2. Immunization Status of All Students, Allegheny County, School Year 2025-26**

Status	N	%
Fully Immunized	147,862	93.8%
Medical Exemption	670	0.4%
Religious Exemption	3,421	2.2%
Moral/Philosophical Exemption	2,553	1.6%
Provisionally Enrolled	854	0.5%
Noncompliant but Attending	2,258	1.4%
Denied Admission	5	0.0%

A lower percentage of students were fully immunized in kindergarten (91.8%), seventh grade (91.5%), and twelfth grade (88.9%), likely because these grades require new or additional immunizations for entry. The percentage of students with complete immunizations (93.8%) was similar to the previous school year (Table 3). There has been a downward trend in overall coverage since the 2013-14 school year (data not shown). Year-to-year variation by grade has been minimal, apart from a drop in twelfth grade coverage from 2016-17 (96.9%) to 2017-18 (92.9%) when the new requirement for a second dose of the MCV vaccine was introduced, and

the drops in seventh and twelfth grade coverage from 2019-20 to 2020-21 when many schools switched to virtual learning due to the COVID-19 pandemic.

**Table 3. Percentage of Fully Immunized Students by School Year and Grade, Allegheny County, 2017-18 to 2025-26**

Grade	December 2017	December 2018	December 2019	December 2020	December 2021	December 2022	December 2023	December 2024	December 2025
Kindergarten	96.4	95.8	95.8	94.2	94.3	93.8	93.0	92.4	91.8
1 <sup>st</sup>	96.7	97.1	96.7	96.8	96.1	95.5	94.9	94.0	93.6
2 <sup>nd</sup>	97.3	97.0	97.2	96.6	96.7	96.0	95.0	95.2	94.3
3 <sup>rd</sup>	96.6	97.3	97.0	97.3	96.5	96.3	95.6	94.8	95.5
4 <sup>th</sup>	97.1	96.9	96.9	96.9	97.0	96.3	95.8	95.4	95.3
5 <sup>th</sup>	96.9	97.3	96.7	97.1	96.8	96.4	96.1	95.0	95.8
6 <sup>th</sup>	97.3	97.2	97.1	96.7	96.8	96.5	95.9	95.6	95.6
7 <sup>th</sup>	95.9	95.6	95.7	91.4	92.0	93.2	92.5	91.1	91.5
8 <sup>th</sup>	96.5	96.6	96.4	96.2	94.3	92.5	94.9	93.4	93.4
9 <sup>th</sup>	96.4	96.1	95.9	96.4	95.5	95.0	94.8	93.1	93.9
10 <sup>th</sup>	96.0	96.5	96.6	96.2	96.2	95.7	95.4	93.2	94.7
11 <sup>th</sup>	96.3	96.8	96.9	96.4	96.0	96.3	95.9	94.3	94.7
12 <sup>th</sup>	92.9	93.3	93.4	89.6	90.5	91.4	90.6	89.0	88.9
<b>Total</b>	<b>96.3</b>	<b>96.4</b>	<b>96.3</b>	<b>95.6</b>	<b>95.3</b>	<b>95.1</b>	<b>94.6</b>	<b>93.6</b>	<b>93.8</b>

Schools were classified as charter, parochial/religious, private/independent, or public. Public schools, which account for 66.8 percent of the schools and 83.9 percent of the total students in Allegheny County (Table 1), had 94.2 percent immunization coverage (Table 4). Charter schools (93.7%), private/independent (93.4%) and parochial/religious schools (89.2%) had lower coverage.

**Table 4. Percentage of Fully Immunized Students by School Type, Allegheny County, 2017-18 SY to 2025-26 SY**

School Type	Dec. 2017	Dec. 2018	Dec. 2019	Dec. 2020	Dec. 2021	Dec. 2022	Dec. 2023	Dec. 2024	Dec. 2025
<b>Charter</b>	96.7	97.0	96.4	95.2	95.2	95.0	94.5	93.6	93.7
<b>Parochial/Religious</b>	94.2	94.8	94.1	93.3	92.5	91.6	91.1	90.5	89.2
<b>Private/Independent</b>	94.2	92.2	93.0	94.1	91.7	91.2	93.0	92.3	93.4
<b>Public</b>	96.6	96.7	96.7	95.8	95.7	95.5	95.1	94.0	94.2

Overall, 60.5 percent of schools had at least 95 percent coverage (Table 5). This is a decrease from the previous school year, when 62.4 percent of schools met the 95 percent coverage

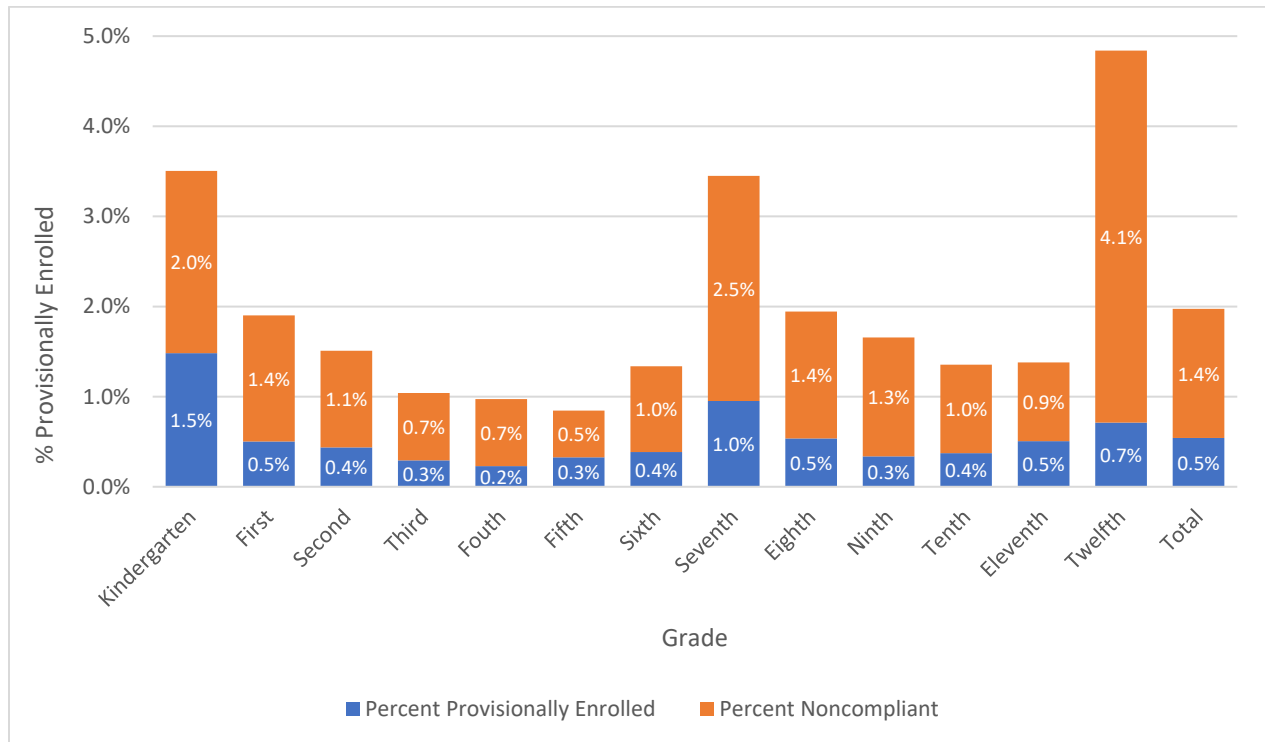
goal. At 69.6 percent, public schools had the highest percentage of schools meeting this goal, while parochial/religious schools had the smallest percentage (31.4%).

**Table 5. Percentage of Schools with >95% Coverage by School Type, Allegheny County, School Year 2025-26**

School Type	Number of Schools	Number of Schools that Met 95% Goal
	N	N (%)
Charter	23	11 (47.8%)
Parochial/Religious	51	16 (31.4%)
Private/Independent	49	25 (51.0%)
Public	247	172 (69.6%)
<b>Total</b>	<b>370</b>	<b>224 (60.5%)</b>

As of December 2025, 0.5% of students attending Allegheny County schools were provisionally enrolled and 1.4% were noncompliant with immunization requirements. Higher levels of noncompliance and provisional enrollment were seen in kindergarten, seventh, and twelfth grades than others due to additional immunization requirements (Figure 1).

**Figure 1: Percentage of Students Noncompliant or Provisionally Enrolled by Grade, Allegheny County, 2025-26**

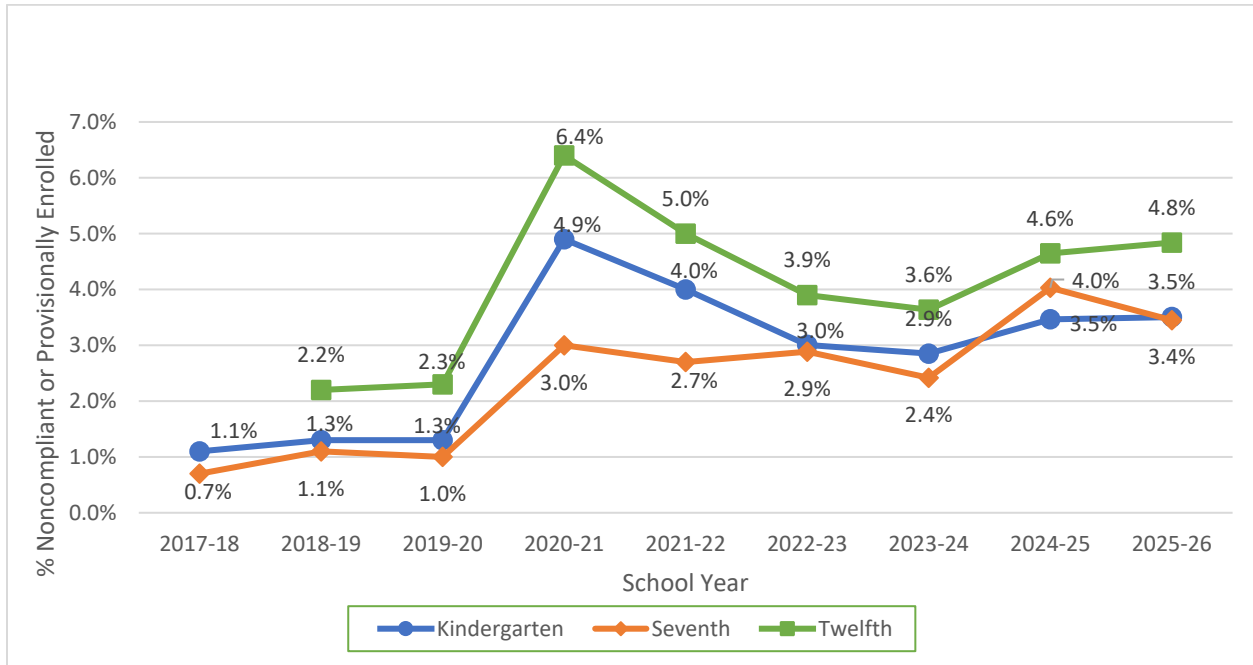


The 2025-26 School Immunization survey distinguished between students attending provisionally and students attending while noncompliant. Before the 2025-26 school year, attending school without all required immunizations or an exemption outside the five-day provisional exemption were still counted as provisionally enrolled.

Provisional and noncompliant enrollments in kindergarten and twelfth grades increased this year compared to last year. Provisional and noncompliant enrollments in seventh grade decreased (Figure 2), correlating to the increased cases of pertussis in Allegheny County in 2024.

The increase in provisional and noncompliant enrollment in 2020-21 corresponded to the switch to remote learning in many districts.

**Figure 2: Percentage of Noncompliant and Provisionally Enrolled Kindergarten, 7th, and 12th Grade Students by Year, Allegheny County, 2017-18 SY to 2025-26 SY**

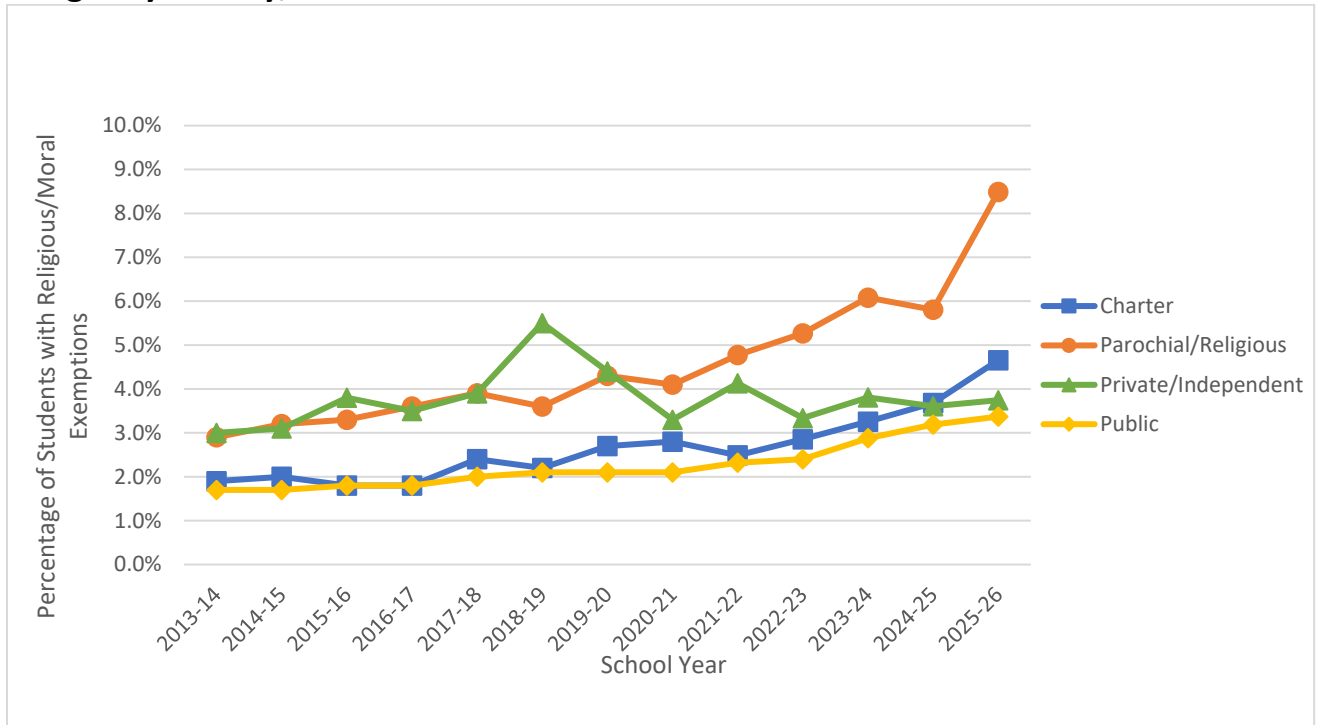


**Table 6: Percentage of Students with Medical, Religious or Moral Exemptions by School Type, Allegheny County, School Year 2025-26**

School Type	Number of Students Enrolled	Number of Medical Exemptions	Number of Religious Exemptions	Number of Moral Exemptions	Number of Total Exemptions
	N	N (%)	N (%)	N (%)	N (%)
Charter	7,971	18 (0.23%)	260 (3.26%)	111 (1.39%)	389 (4.88%)
Parochial/Religious	10,414	24 (0.23%)	578 (5.55%)	306 (2.94%)	908 (8.72%)
Private/Independent	6,971	26 (0.37%)	178 (2.55%)	83 (1.19%)	287 (4.12%)
Public	132,268	602 (0.46%)	2,405 (1.82%)	2,053 (1.55%)	5,060 (3.83%)
<b>Total</b>	<b>157,624</b>	<b>670 (0.43%)</b>	<b>3,421 (2.17%)</b>	<b>2,553 (1.62%)</b>	<b>6,644 (4.22%)</b>

In the 2025-26 school year, 4.2 percent of students submitted a medical, religious, or moral exemption (Table 6). Parochial/religious schools had the highest percentage of total exemptions (8.7%). The percentage of religious and moral exemptions in parochial/religious increased to 8.5 percent in the 2025-26 school year, compared to 5.8 percent in the previous school year. Public schools had the lowest percentage of total exemptions (3.8%). (Figure 3)

**Figure 3. Percentage of Students with Religious/Moral Exemptions by Year, Allegheny County, 2013-14 SY to 2025-26 SY**



## Immunization Status by Vaccine

Except for MCV, each vaccine required for school immunization had over 95% coverage among all students enrolled in K-12 schools. Public schools had the highest coverage for every vaccine. Parochial/religious schools had the lowest coverage out of every school type and did not meet the 95 percent goal for any vaccine (Table 7).

**Table 7. Percentage of K-12 Students Immunized by School Type and Vaccine, Allegheny County, 2025-26 SY**

Vaccine	Charter	Parochial/Religious	Private/Independent	Public	Overall
MMR (2 doses)	96.1%	92.4%	95.6%	96.6%	96.3%
VZV (2 doses)	96.0%	92.1%	95.6%	96.5%	96.1%
HBV (3 doses)	96.7%	92.8%	96.1%	97.0%	96.7%
Polio (4 doses)	96.0%	92.4%	95.6%	96.5%	96.2%
DTaP (4+ doses)	96.4%	92.7%	96.1%	96.4%	96.1%
Tdap (1 dose)	95.1%	92.0%	93.7%	95.7%	95.4%
MCV4 (1+ doses)	94.5%	90.2%	92.2%	95.1%	94.6%

Kindergarteners in public schools did not exceed 95 percent coverage for any required vaccine except Hepatitis B (Table 8). Coverage was low among kindergarteners in parochial/religious schools, which did not exceed 90 percent coverage for any vaccine.

**Table 8. Percentage of Kindergarten Students Immunized by School Type and Vaccine, Allegheny County, School Year 2025-26**

Vaccine	Charter	Parochial/Religious	Private/Independent	Public	Overall
MMR (2 doses)	93.1%	86.5%	96.4%	94.3%	93.8%
VZV (2 doses)	92.8%	86.1%	96.6%	93.2%	92.9%
HBV (3 doses)	95.4%	89.8%	96.7%	95.5%	95.1%
Polio (4 doses)	93.0%	86.9%	96.3%	94.0%	93.5%
DTaP (4+ doses)	93.3%	88.1%	96.6%	94.1%	93.7%

No school type achieved 95 percent coverage among seventh or twelfth grade students for the additional Tdap and meningococcal vaccine doses required for school (Table 9). Public schools had the highest coverage among school types for both seventh grade and twelfth grade, with 92 percent of seventh grade students receiving the required doses of Tdap and MCV4 vaccines, and 93 percentage of twelfth grade students receiving a second dose of MCV4 (Table 10).

**Table 9. Percentage of 7<sup>th</sup> Grade Students Immunized by School Type and Vaccine, Allegheny County, School Year 2025-26**

Vaccine	Charter	Parochial/Religious	Private/Independent	Public	Overall
MCV4 (1 dose)	92.3%	87.9%	91.3%	92.1%	91.8%
Tdap (1 dose)	92.6%	89.0%	91.1%	92.2%	92.0%

**Table 10. Percentage of 12<sup>th</sup> Grade Students Immunized by School Type and Vaccine, Allegheny County, School Year 2025-26**

Vaccine	Charter	Parochial/Religious	Private/Independent	Public	Overall
MCV4 (2 doses)	92.6%	86.9%	86.1%	93.2%	92.5%

## Summary

In Allegheny County, overall immunization coverage for the required school vaccinations was 93.8 percent for the 2025-26 school year. There has been a slow downward trend in immunization coverage from the 2013-14 school year to the present. The slight decrease in overall coverage from 2019-2020 to 2021-2022 was likely due to the impact of the COVID-19 pandemic, which led to a decrease in well-child visits and preventive healthcare, including immunizations, but coverage continued to decrease after the height of the pandemic as well.<sup>5,6</sup>

Overall, 60.5 percent of all schools had at least 95 percent of their students fully immunized. Public schools had the highest percentage of schools (69.6%) with 95 percent coverage, followed by private/independent schools (51.0%), charter schools (47.8%), and parochial/religious schools (31.4%).

The percentage of students with exemptions continues to be low. Medical exemptions were submitted for only 0.4 percent of students. Religious exemptions (2.2%) and moral exemptions (1.6%) increased slightly from the previous school year from a combined 3.4 percent in 2024-25 to a combined 3.8 percent in the 2025-26 school year. Parochial/religious schools continue to have the highest percentages of religious and moral exemptions.

The high percentages of provisional and noncompliant enrollment for students in kindergarten, seventh, and twelfth grade point to a need to increase immunization efforts before the school year starts. Schools should provide additional information to parents during the summer about immunization requirements for students in these grades. Providers may need to hold additional vaccination clinics before the start of the school year. Decreasing the number of students noncompliant and provisionally enrolled when they start school is necessary to protect the health of these students, as well as students who are immunocompromised or otherwise susceptible to vaccine-preventable disease.

Allegheny County's high immunization coverage can be attributed to the hard work and dedication of school nurses, parents, and clinicians who help ensure students are fully immunized.